



Quick Install Guide



Getting Started

For highest performance and reliability, it is recommended that you install the latest service pack (SP) and updates. For Windows®, go to the Start menu and select **Windows Update**. For Mac®, go to the Apple menu and select **Software Update**.

Windows FireWire® Installations

You must first connect the drive using the USB cable to install FireWire device drivers. If your system has only a FireWire port, go to support.wdc.com, click **All Downloads**, locate your product name, and download the FireWire device driver installer onto your computer desktop.

Windows 98SE

You must install device drivers on your system. Go to support.wdc.com, click **All Downloads**, locate your product name, and download the device driver installer onto your computer desktop.

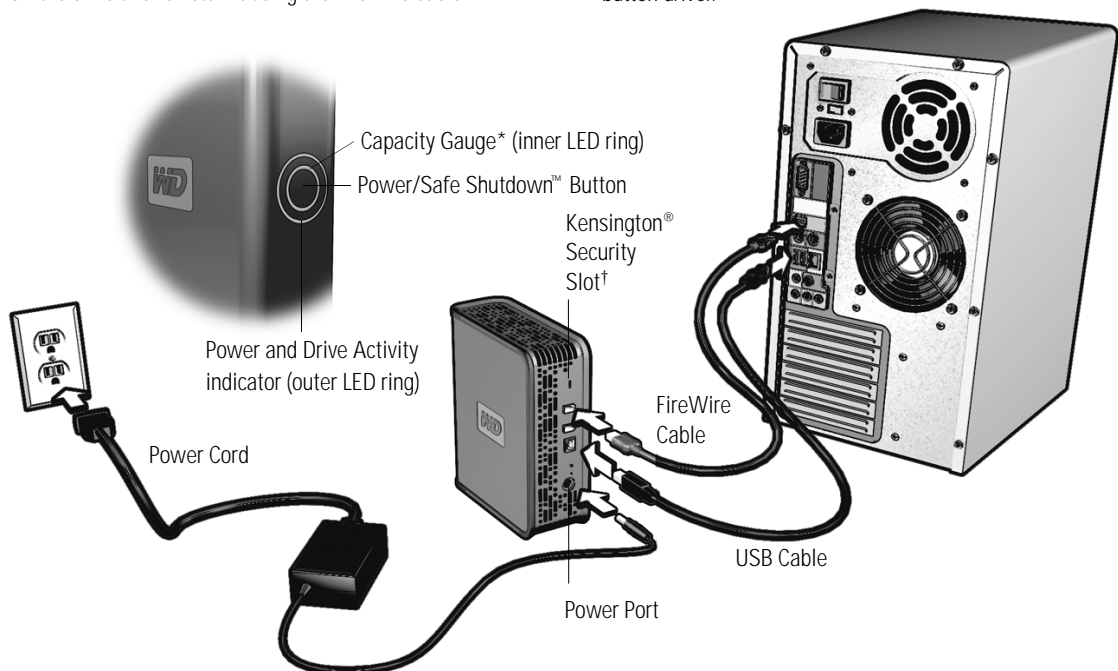
Installing the Drive

Windows

1. Turn on your computer.
2. Connect the drive's power cord and USB cable as shown.
3. Drive utilities are installed automatically. If a security alert is displayed during this installation, click **Accept** or **Continue**.
4. When finished, a menu displays a list of choices including WD Backup™ and free Google™ software. To install the software, simply double-click your choice on the menu; otherwise, click **Quit** to begin using the drive.
5. If you want to use the FireWire connection at this time, turn off the drive and reinstall it using the FireWire cable.

Macintosh®

1. Turn on your computer.
2. Connect the drive's power cord and FireWire or USB cable as shown.
3. The drive mounts to the desktop. Double-click the My Book drive icon.
4. Double-click the Mac folder, then double-click the WD Button Manager Software disk image that contains the installer.
5. Double-click the WD Button Manager package inside the Mac disk image to install the button manager and FireWire button driver.



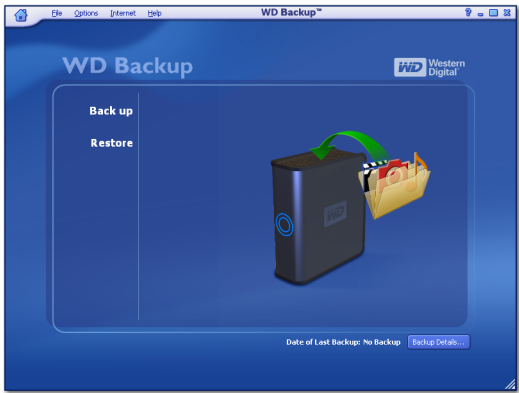
*Capacity Gauge indicates remaining free space on the drive after all software and drivers are installed.

†For more information on the Kensington Security Slot, visit www.kensington.com.

WD Backup

WD Backup is easy-to-use software for backing up and restoring your files. Information on how to use this software, including backup options and supported file types, is readily available in the online help which can be accessed from any screen.

After installation, you can launch WD Backup by double-clicking its icon on the desktop or system tray. Easily navigate through the menus and make your selections as prompted. Once you've set up a scheduled backup, you can perform an immediate backup by right-clicking the WD Backup Monitor icon on the system tray and selecting **Back up Now**. If you have multiple scheduled backups, only the first backup on the schedule is launched.




Turning Off the Drive

The external drive turns off when you shut down the computer. You may also follow these steps to turn off the drive.

Using Safe Shutdown

1. Press the Power/Safe Shutdown button once. You may hear the drive power down before the power light turns off.
2. The drive is now shut down properly, and you may safely disconnect the drive.

Using Auto-off (Windows)

1. Right-click the Safely Remove Hardware icon  in your system tray and select **Safely Remove Hardware**. You may hear the drive power down before the power light turns off.
2. The drive is now shut down properly, and you may safely disconnect the drive.

Troubleshooting

If you have problems when installing or using this product, refer to this troubleshooting section or visit our support Web site at support.wdc.com and search our knowledge base for more help.

How to	Answer ID
■ install, partition, and format the drive in Windows 2000	34
■ install, partition, and format the drive in Windows XP	207
■ format the drive to the FAT32 file system**	1364
■ use the drive on a PC and a Macintosh computer simultaneously	291
■ disable the setting that boots the system from the external drive	1201
■ install, partition, and format the drive in Windows 98SE (FireWire)	1049

*** This WD drive is preformatted as a single FAT32 partition for compatibility with all Windows operating systems. The FAT32 file system has a maximum individual file size of 4 GB and cannot create partitions larger than 32 GB in Windows 2000/XP. Windows 2000 and XP users can overcome these file size limitations by reformatting the drive to NTFS using the Disk Management utility. Windows 98SE and Me do not support NTFS. See answer ID 1287 at support.wdc.com and article IDs 314463 and 184006 at support.microsoft.com for further details.*

System Requirements

Windows

- An available USB or FireWire port
- Windows 98SE/Me/2000/XP

Macintosh

- An available USB or FireWire port
- Mac OS X 10.2 or later

Regulatory Compliance

FCC Class B Information

This device has been tested and found to comply with the limits of a Class B digital device, pursuant to Part 15 of the FCC Rules. These limits are designed to provide reasonable protection against harmful interference in a residential installation. This unit generates, uses, and can radiate radio frequency energy and, if not installed and used in accordance with the instructions, may cause harmful interference to radio or television reception. However, there is no guarantee that interference will not occur in a particular installation. Any changes or modifications not expressly approved by WD could void the user's authority to operate this equipment.

The following booklet, prepared by the Federal Communications Commission, may be helpful: *How to Identify and Resolve Radio/TV Interference Problems*. This booklet is Stock No. 004-000-00345-4 available from the US Government Printing Office, Washington, DC 20402.

CSA Notice

Cet appareil numérique de la classe B est conforme à la norme NMB-003 du Canada.

This Class B digital apparatus complies with Canadian ICES-003.

Underwriters Laboratories Inc.

Approved for US and Canada. CAN/CSA-C22.2 No. 60950-1, UL 60950-1. Information Technology Equipment - Safety - Part 1: General Requirements (File E101559).

CE Compliance For Europe

Verified to comply with EN55022 for RF Emissions and EN50082-1 for Generic Immunity, as applicable.

Warranty Information

This product contains no user-serviceable parts. Refer servicing only to authorized WD personnel or a WD-approved service center.

Obtaining Service

WD values your business and always attempts to provide you the very best of service. If this Product requires maintenance, either contact the dealer from whom you originally purchased the Product or visit our product support Web site at support.wdc.com for information on how to obtain service or a Return Material Authorization (RMA). If it is determined that the Product may be defective, you will be given an RMA number and instructions for Product return. An unauthorized return (i.e., one for which an RMA number has not been issued) will be returned to you at your expense. Authorized returns must be shipped in an approved shipping container, prepaid and insured, to the address provided on your return paperwork. Your original box and packaging materials should be kept for storing or shipping your WD product. To conclusively establish the period of warranty, check the warranty expiration (serial number required) via support.wdc.com. WD shall have no liability for lost data regardless of the cause, recovery of lost data, or data contained in any Product placed in its possession.

Limited Warranty

WD warrants that the Product, in the course of its normal use, will be free from defects in material and workmanship for a period of one (1) year, unless otherwise required by law, and will conform to WD's specification therefor. This limited warranty period shall commence on the purchase date appearing on your purchase receipt. WD shall have no liability for any Product returned if WD determines that the Product was stolen from WD or that the asserted defect a) is not present, b) cannot reasonably be rectified because of damage occurring before WD receives the Product, or c) is attributable to misuse, improper installation, alteration (including removing or obliterating labels and opening or removing external enclosures, unless authorized to do so by WD or an authorized service center), accident or mishandling while in the possession of someone other than WD. Subject to the limitations specified above, your sole and exclusive warranty shall be, during the period of warranty specified above and at WD's option, the repair or replacement of the Product. The foregoing warranty of WD shall extend to repaired or replaced Products for the balance of the applicable period of the original warranty or ninety (90) days from the date of shipment of a repaired or replaced Product, whichever is longer.

The foregoing limited warranty is WD's sole warranty and is applicable only to products sold as new. The remedies provided herein are in lieu of a) any and all other remedies and warranties, whether expressed, implied or statutory, including but not limited to, any implied warranty of merchantability or fitness for a particular purpose, and b) any and all obligations and liabilities of WD for damages including, but not limited to accidental, consequential, or special damages, or any financial loss, lost profits or expenses, or lost data arising out of or in connection with the purchase, use, or performance of the Product, even if WD has been advised of the possibility of such damages. In the United States, some states do not allow exclusion or limitations of incidental or consequential damages, so the limitations above may not apply to you. This warranty gives you specific legal rights, and you may also have other rights which vary from state to state.

Technical Support Services

If you need additional information or help during installation or normal use of this product, visit our product support Web site at support.wdc.com and search our knowledge base.

support.wdc.com

www.westerndigital.com

800.ASK.4WDC North America

949.672.7199 Spanish

+800.6008.6008 Asia Pacific

+31.20.4467651 Europe/Middle East/Africa

Western Digital

20511 Lake Forest Drive

Lake Forest, California 92630

U.S.A.

Western Digital is a registered trademark; and WD, the WD logo, WD Backup, and Safe Shutdown are trademarks of Western Digital Technologies, Inc.

Other marks may be mentioned herein that belong to other companies.

© 2006 Western Digital Technologies, Inc. All rights reserved.