



PTRX-7300 INSTALLATION GUIDE

DISCLAIMER: We are not responsible for any damage to your radio during installation. Please operate at your own risk.

You can access the latest version of this document at www.radiospectral.com/ptrx-7300

This document has been prepared to help you to install PTRX-7300 into your ICOM IC-7300 radio. This is solderless operation, therefore this installation does not require any equipment other than a phillips head screwdriver, and you can remove PTRX-7300 from your radio at any time easily.

PTRX-7300 shipped with following items as shown in Figure.1:

- 1- PTRX-7300.
- 2- TMP-MCX cable (to be connected to J1431).
- 3- 4 pin external tuner cable extension (to be connected to J331).
- 4- MCX to SMA cable.

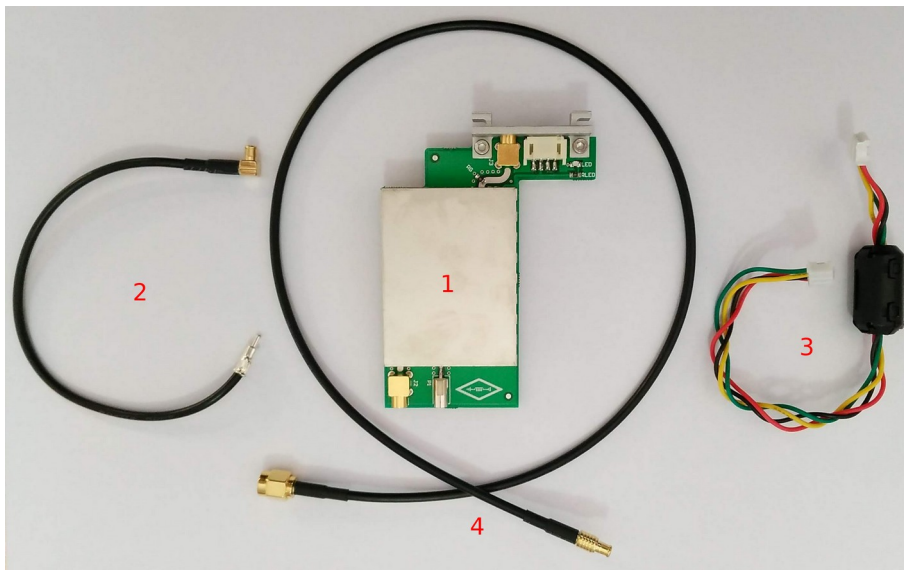


Figure.1 : PTRX-7300 package items.

Installation Procedure

- 1- Plug item 3 (4 pins external tuner cable extension) to PTRX-7300 as in Figure.2.
- 2- Open the top cover of the ICOM IC-7300 with a screw driver carefully.
- 3- Remove MOLEX/JST connector (in Figure.3) from your ICOM IC-7300.
- 4- Place PTRX-7300 into the external tuner opening shown in Figure.4.
- 5- Plug item 3 (4 pins external tuner cable extension) to J331 as shown in Figure.5.
- 6- Plug TMP connector of the TX/RX line to PTRX-7300 as shown in Figure.5.
- 7- Plug item 2 (TMP-MCX cable) into J1431, and attach the MCX socket into the MCX port of PTRX-7300.
- 8- Plug item 4 (MCX to SMA cable) and external tuner cable into the RF/Tuner output of PTRX-7300.
- 9- Turn on your radio, and connect the SMA cable to your SDR receiver. Make sure LED indicator of PTRX-7300 is on. Once you test with your SDR receiver, you can close the top cover.
- 10- You are all set. Enjoy your PTRX-7300 panadapter!

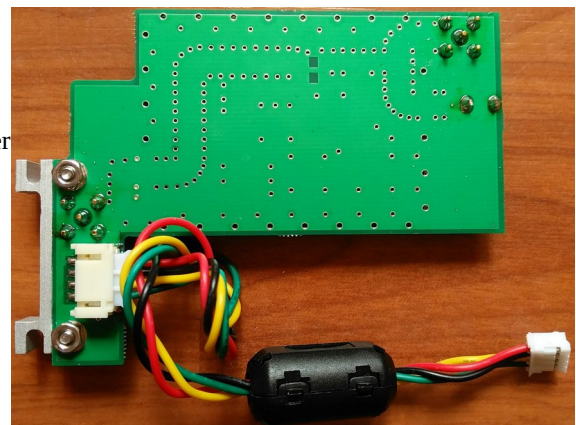


Figure.2 : 4 pin tuner cable installation.

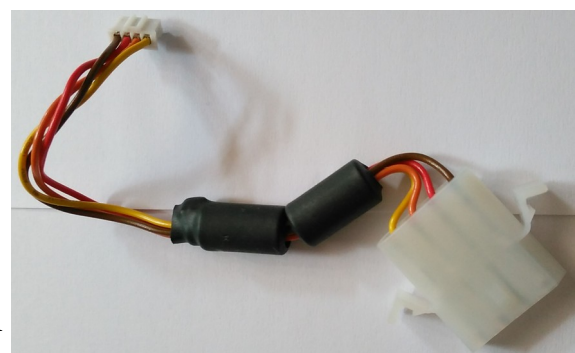


Figure.3 : MOLEX/JST external tuner cable.

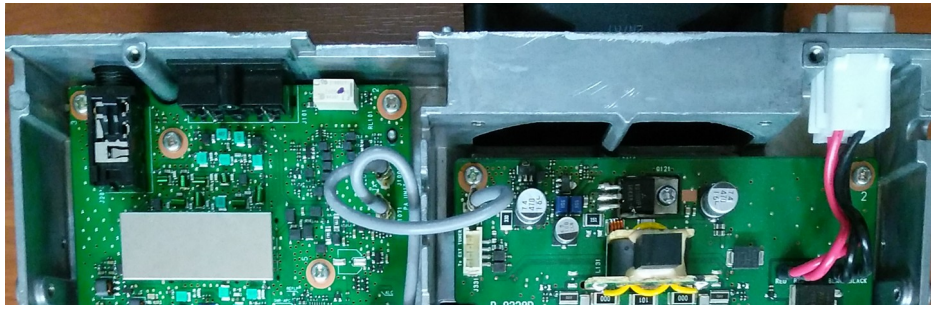


Figure.4 : External tuner opening.

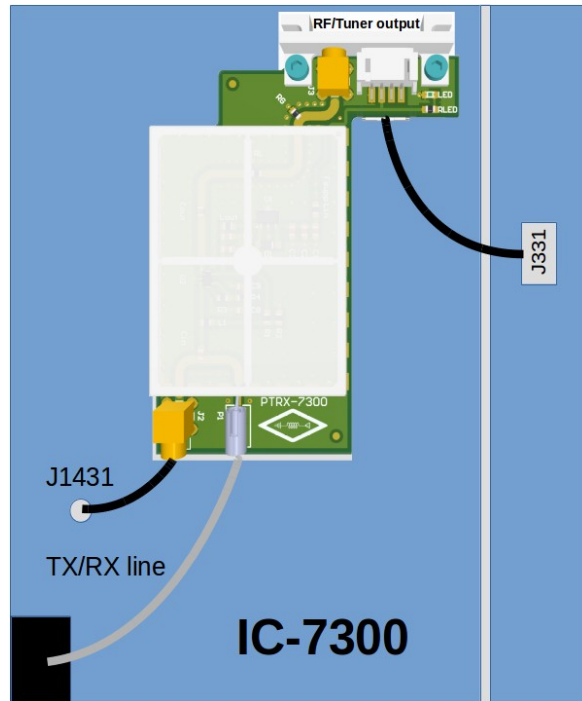


Figure.5 : PTRX-7300 installation diagram.

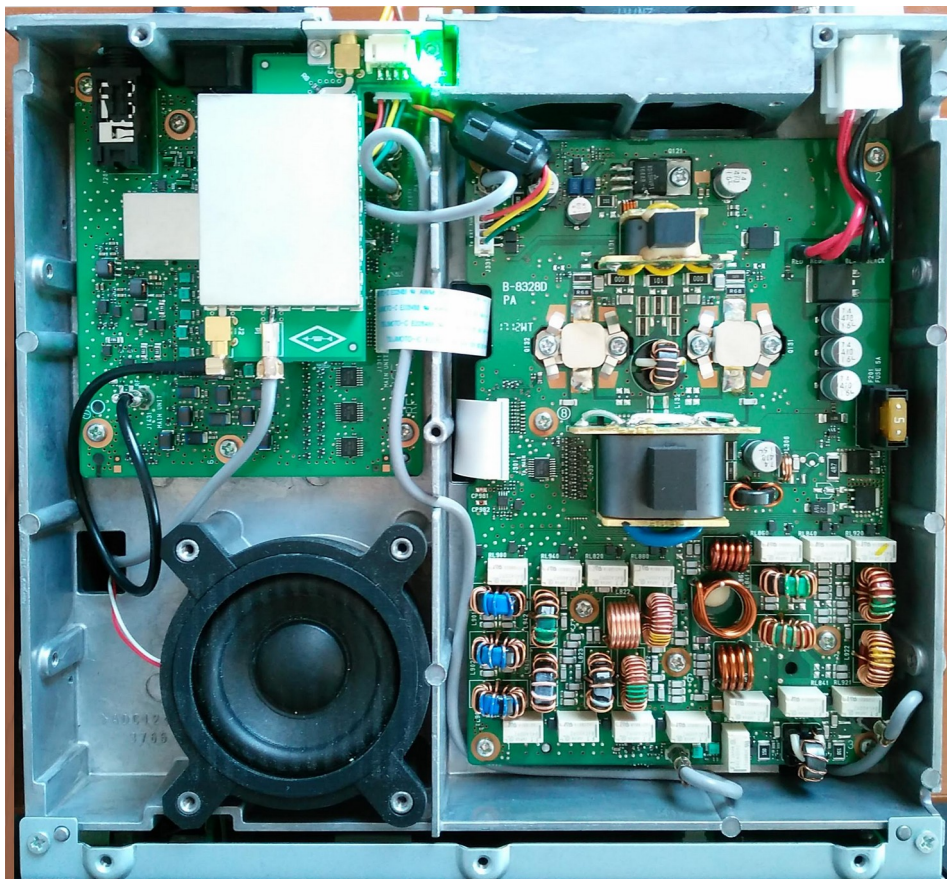


Figure.6 : Ready to use PTRX-7300 installation.