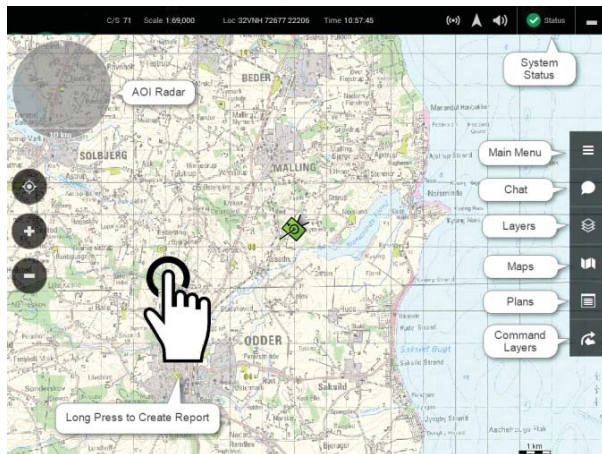


hC2™ PATROL 2.2 Quick User Guide

Overview



Status Bar Icons

Communication:

Communication is working.....



Communication is partly working....



Communication is not working.....



GPS Signal:

On



Off/No Signal.....


Spoofed (req. special GPS).....
When spoofed the FFT turns
yellow - long press to clear


System Status

All is working.....



Status problem acknowledged.....



Problem detected.....



Map Buttons

Free.....



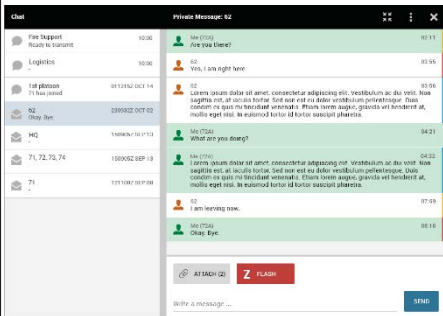
Center to Own FFT.....





Rotate.....



Chat

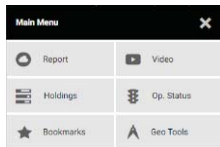


- ▶ Number is all unread messages
- ▶ Chat panel can be extended by use of the 
- ▶ Chat functionality is found under 
- ▶ Attachments (including plans) must be actively downloaded, except command layers

Planning

- ▶ Select New Plan from the Plans Panel menu.
- ▶ To edit a layer tap on the pen 
- ▶ Use the options in the Plans Panel to add/edit layers and to send the plan.

Main Menu



- ▶ Report; report or create a sketch on the SIT Layer
- ▶ Video; requires video integration
- ▶ Holdings; report your holdings or view your subordinates holdings
- ▶ Operational Status to send/receive status from other units
- ▶ Bookmarks; list of created bookmarks
- ▶ Geo Tools; AOS, LOS, Range/Bearing, Highest Point, Range Fan, Range Ring, Find Location

Hot Button Section

Quick way to send a MEDEVAC, TIC or IED with your position

Advanced Functionality:

- ▶ Traces; to view your own and other units honesty traces
- ▶ Current Org; to select your own unit and subordinates
- ▶ USB Copy; to transfer data from/to USB stick
- ▶ Networks; to change network setup
- ▶ Drive; to execute a route

System Section Include:

- ▶ Settings; General, Map, Symbol, Hot Buttons, Aggregated layer
- ▶ About Box
- ▶ Exit the application