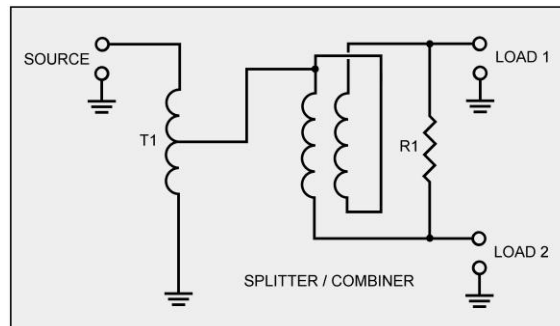


Receiving Splitters

Virtually all splitters are based on the Magic T with a matching transformer on the input. These splitters are certainly less than ideal, but they are simple and many times (but not always) better than a direct parallel connection.

The Magic T transformer is 5 to 10 turns of twisted pair wire core. Configured as a center-tapped winding. R1 is twice the expected load impedance. For 50 ohm systems use a 100 ohm resistor.



Losses

Typical loss of the magic T is 3dB per port. As a combiner the loss is 0.1dB. The only other significant loss, when properly terminated, is a slight loss in T1. When combining in-phase signals, loss is only the loss in T1, there is no “combining loss”.

Splitter Use

When used as a splitter, connect your antenna to the source port and then two receivers can be used with one receive antenna such as for SO2R use.



Other KD9SV products can be seen and ordered from DX Engineering at www.DXEngineering.com

Part Number: **SVP-SV-RSC**

Info Sheet Rev 1
Page 1 of 1

KD9SV
Products

Gary Nichols, KD9SV
4121 Fahlsing Road
Woodburn, IN 46797
Kd9sv@comcast.net
Tel 260 632-4642