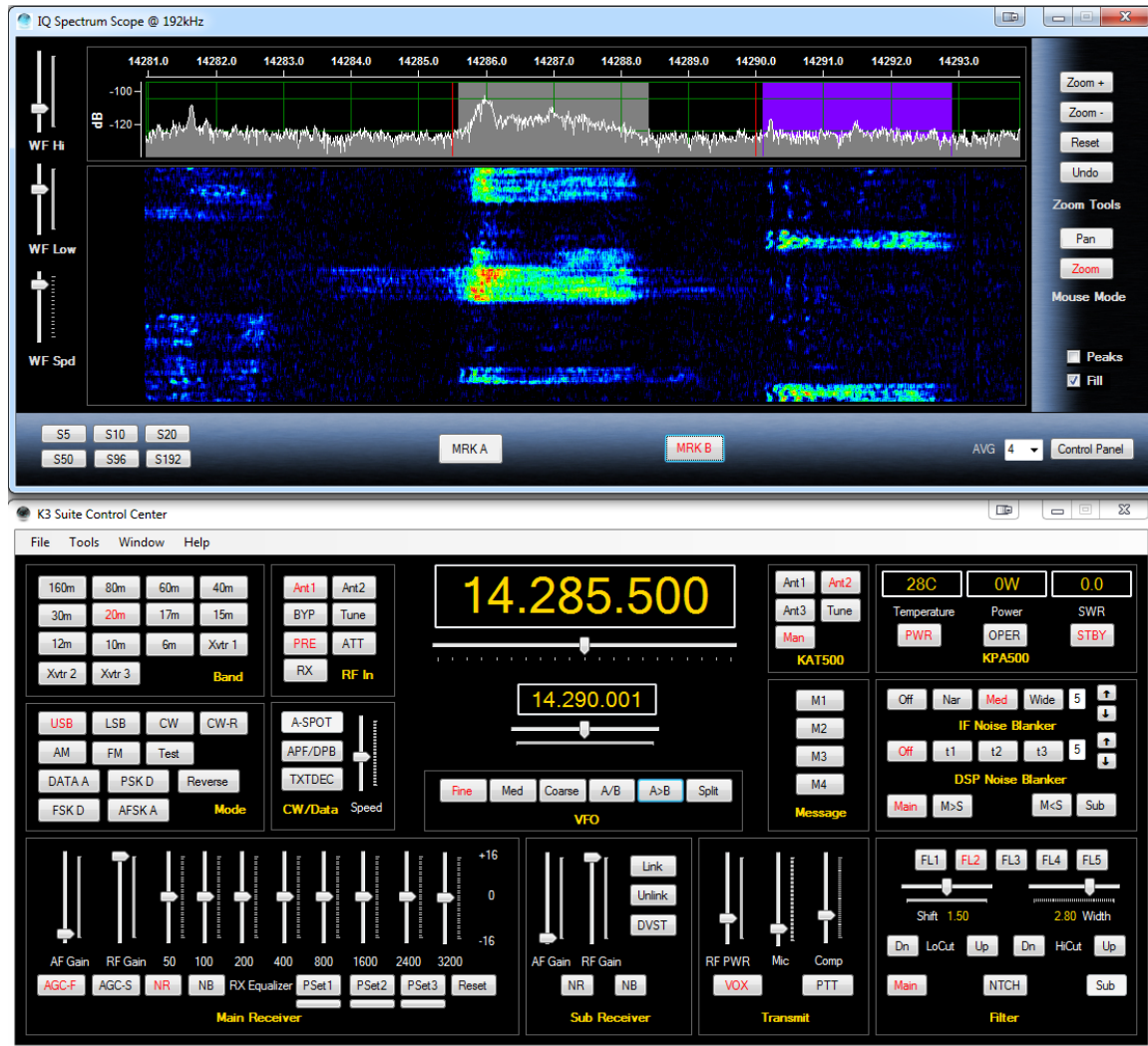


Win4K3 Suite Documentation V1.782

January 2016

Thank you for buying Win4K3 Suite. The Suite supports the Elecraft K3 and KX3 transceivers, the KPA500 Amplifier, the KXPA100, the KAT500 Antenna tuner, the P3 Panadapter and external logging programs and third party hardware. It also provides a software based Spectrum Scope for the KX3 requiring nothing more than a suitable sound card for your computer. NAP3's LPPAN with the K3 is also supported.



Support is just an email away at support@va2fsq.com. Release notes at available at http://va2fsq.com/?page_id=373

Table of Contents

Part 1: Installation and Configuration

Setup of the Elecraft K3 and KX3 Radios

- Installation of the Software
- Setup of Comports

Setup of the KX3 Spectrum Scope and K3 with LPPAN

- Installation Steps
- Configuring Win4K3Suite for the Spectral Display
- Spectrum Setup
- IQ Balance
- Use of Third Party Panadapter Software

Installation and Configuration of Video for the P3

Integration of Third Party Software and Hardware

- Concept
- Connecting to Third Party Applications
- Example: DXCommander from DXLabs Suite
- Connecting to Ham Radio Deluxe Logbook and DM780
- Using MicroHam Routers
- New!!** Integration with CW Skimmer

Settings Menu in Depth

- P3 / K3-X Settings
- P3Macros and Spectrum Scope Macros
- Third Party SW / HW Tab
- User Preferences

Limitations of the Software and Elecraft API

Part 2: User Interface and Functionality

Radio Control Screens

- VFO A and VFO B Tuning
- Hidden Controls Accessed with a Right Click
- Receive and Transmit Equalizers
- Filters and Passband Tuning
- Band Stack Registers

The Win4K3Suite Spectrum Scope

- Zooming and Panning
- QSY to Signal
- Waterfall Settings
- Signal Averaging
- Other Controls
- Spectrum Control Panel
- Spectrum Spots
- Function Buttons

Using the P3 Control Screen

K3-X Frequency Memories

CW - FSK-D - PSK Terminal

- Controls
- Settings - Fonts
- Messages
- Logging to ADIF, DXKeeper or HRD Logbook
- K1EL WinKey

ClubLog Spotting Window

- How it Works
- Setup

Part 3: Advanced Topics

Programmable Macros

- K3- KX3 Macros
- P3 and Spectrum Scope Macros
- KPA500 Macros
- KAT500 Macros

Radio Menu Items (K3 and KX3)

- Saving the Settings to a File
- Loading the Settings
- Errors

Part 1: Installation and Configuration

Setup of the Elecraft K3 and KX3 Radios

There is very little setup required. You will need a serial connection to the K3 or KX3, and additional serial connections to the KPA500, and the KAT500 if present. The P3 connects through the K3 so no separate connection is required. The P3 is not used with the KX3. The baudrate should also be set on the equipment prior to connecting with Win4K3Suite. By default, the connection is usually 38400 and this is the initial default for Win4K3Suite. If you wish to use the P3 with a hardware video capture board or a Webcam, you must also set the external P3 SVGA resolution to match.

Win4K3Suite will update its display automatically when the radio equipment is adjusted manually with a few exceptions, limited by the K3 serial API. One of these is the coarse / fine tune buttons. **Please leave these in the fine tune mode of 1Hz increments on the K3 and KX3.** Win4K3Suite has its own control of this, independent of the radio. Also please read the section on the receive and transmitter equalizers here: [Receive and Transmit Equalizers](#).

If you plan on using the **KAT500** auto-tuner you must first go into the Elecraft KAT500 utility and turn off "Sleep mode" otherwise you will not be able to connect to the KAT500.

Installation of the Software

Once you have downloaded the software (va2fsq.com), double click on the zip file, extract the files, and then double click on Setup.exe. This will install the software to your computer and install an Icon on your desktop. The software allows a 30 day free trial with full functionality to see if it meets your needs.

If you wish to use the P3 Control interface, you will need a hardware video capture board and the SVGA board for the P3. Currently the best choice is the Avermedia HD Game Broadcaster with a VGA input. There are others available but they are expensive (over \$500) and have not been tested.

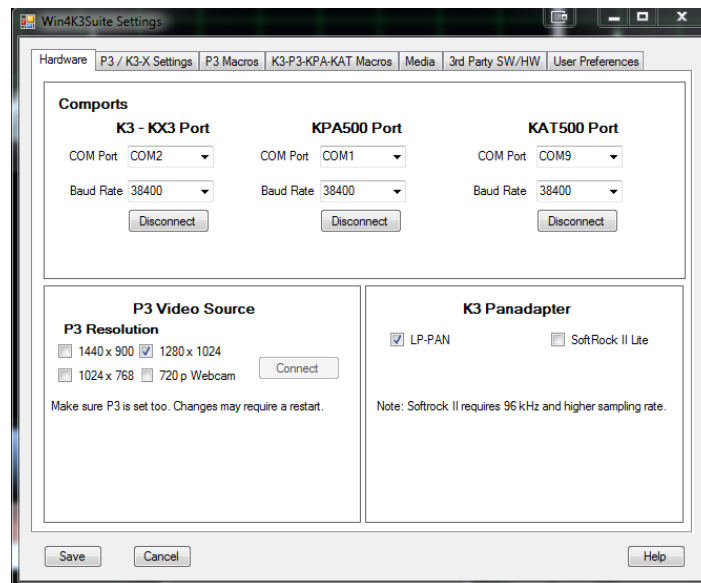
In addition, if you would like to capture real time video of the P3 display to disk, you will need to download the free FDDSHOW compression codec available from

<http://sourceforge.net/projects/ffdshow/> .

You only need to install this and there is no configuration required. This utility allows compression of the video to a reasonable value of about 20 Mbytes per minute. Without this, the video storage requires about 30 Mbytes per second!

Setup of Comports

The first time you launch Win4K3Suite, you will be taken to the setup menu automatically. You must connect to at least the Elecraft K3 or K3X in order to use the software. You will see the following menu:



The menu has several different tabs which will be covered shortly. In order to continue you must connect to the K3 or KX3 Port first. Make sure that the K3 is on, and pick the comport for the K3 from the drop down menu if the baudrate is different than 38400, then press the connect button. If successful, the button will change to “Disconnect”. If the connection to the K3 is not successful, you will be informed to check that you have the right port. If you cannot connect, then the program will not allow you to continue. You must have at least a connection to the K3 or K3X before continuing. If you cannot get a connection close the Window and the program will close. If you are having issues, it is advisable to use the Elecraft K3 or KX3 utility to determine why. Once this is operating you are good to go.

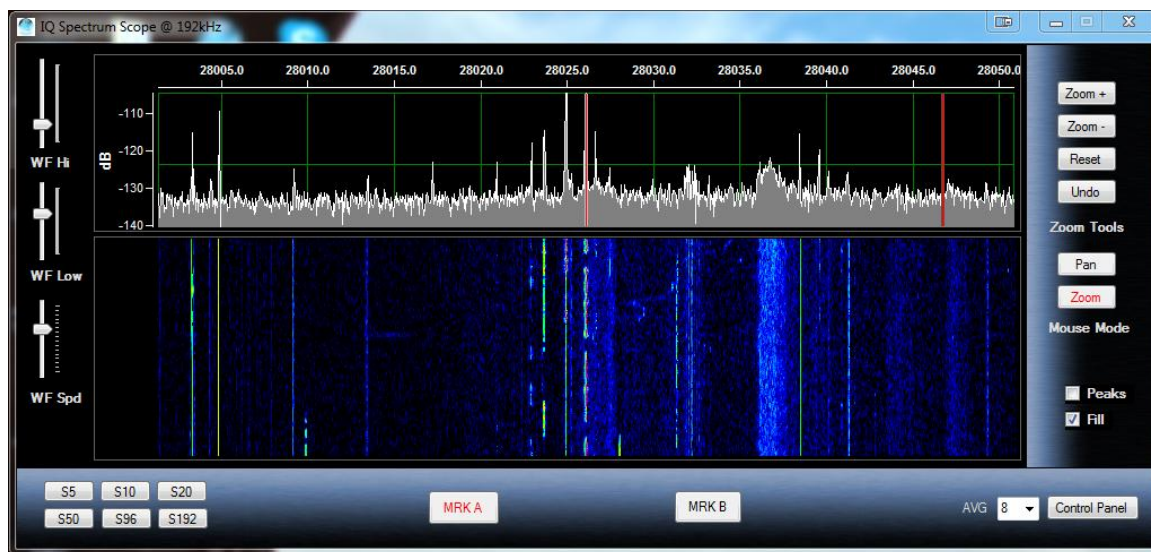
When you have connected to the K3, you may then pick the comports for the KPA500 and / or the KAT500, clicking on the connect buttons as appropriate. If you connect to the KX3, you can use the KAT500 as your tuner if you do not have the KX3100ATU. Please note that to use the KAT500, you must first open the KAT500 utility from Elecraft and turn off sleep mode. Otherwise Win4K3 will not connect.

Once the K3 is connected, you can exit the setup menu by clicking the Save button. All other setup functions can be done later if you wish by selecting the K3 Control Window and Tools Settings...

If you wish to change comports for the K3-X, KPA500 or KAT500 and you have already connected and saved the initial settings, you will need to click one of the "Disconnect" buttons. This will reset the ports and close Win4K3Suite and on the subsequent start will prompt you to connect the radio again. All other settings will remain the same.

The software will auto-determine if you have a K3 or K3X connected. If you use both radios, it is recommended to install the software in different folders where you can have dedicated settings for each radio. To do this, first do a normal installation of one copy. Create a new Folder and copy all of the software from the normal install folder to this new folder. You can then create a shortcut to the "Windows4P3.exe" file in this folder on your desktop.

Setup of the KX3 Spectrum Scope and K3 with LPPAN



Installation Steps

The KX3 IQ output, the output from LP-Pan and the SoftRock II Lite, require a **stereo** audio adapter to be installed on your system. Many laptops do not have a stereo input. If you attempt to use the spectrum scope with a non-stereo input, then you will not get correct results. Most motherboard based audio devices and outboard USB audio devices do have stereo inputs. Unfortunately, Windows

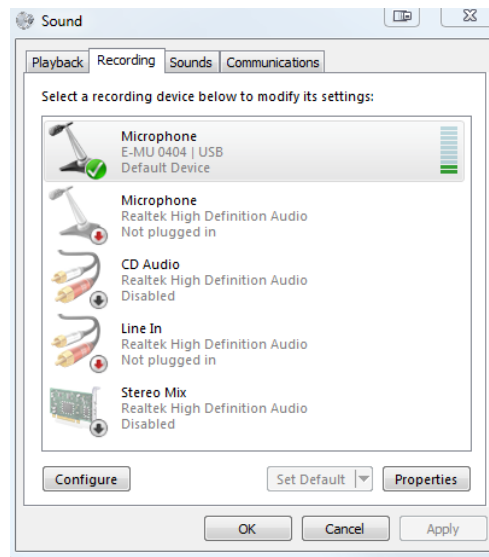
does not always tell you if the audio device is stereo in a straight forward manner.

The **first step** before trying to install the spectrum scope is to check which devices are installed on your system and make sure they are configured correctly.

Vista, Windows 7 and 8 Sound Device Setup

Step 1: Open the Control Panel and select "Sound"

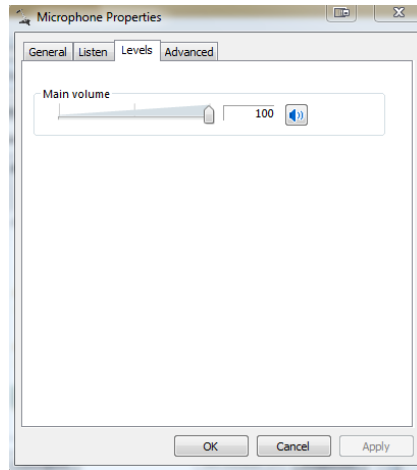
Step 2: Select the "Recording" tab as shown in the following figure:



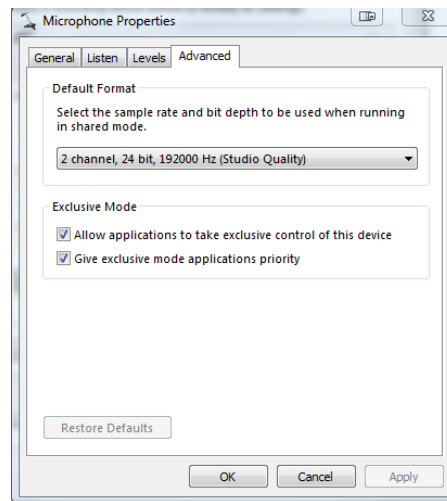
In this figure you can see that there are a number of devices shown. In this example, the Microphone Input for the E-MU 0404 device is the one that will be selected. Please note that Windows enumerates this as a Microphone which it is NOT. It actually is stereo input. Please also note that there is a motherboard Line In connection available. However, you cannot select this device since there is no cable plugged in. Many devices will only become active when a cable is actually plugged in.

Step 3: Select the device you wish to use and click the "Properties" button.

Step 4: Click on the Levels Tab and increase the volume to maximum. In some cases you will also see a balance button. Set both channels to maximum. You can adjust this later if the levels seem to be too high.



Step 5: Next on the "Advanced" tab:



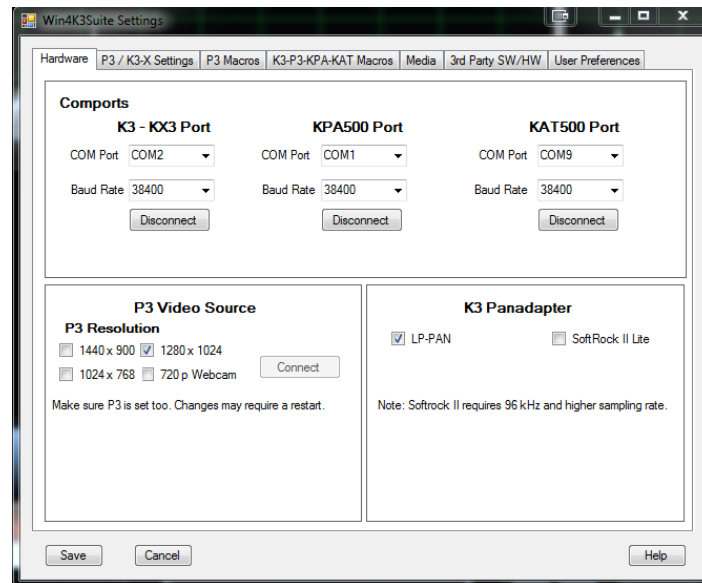
Here you will see a list of formats that your device supports. However in some cases the list will be incorrect and Windows will actually try and up sample the data stream which is not appropriate. When in doubt, refer to the manufacturer of your sound card and use that setting in Win4K3Suite. **You must set this to your planned maximum sample rate usage.**

Please note that some devices such as the IMic, require you to set this entry or they will not work in stereo. So for the IMic, make sure to set the format to 2 channel 48000 Hz.

Configuring Win4K3Suite for the Spectral Display

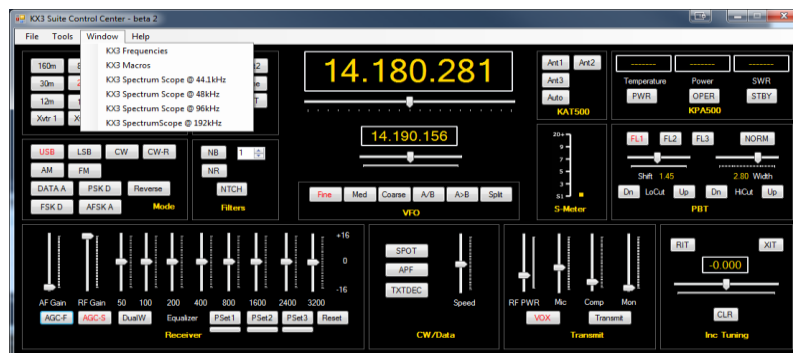
Both the K3 and KX3 are supported with the Spectrum Display. In the case of the KX3, nothing needs to be selected in the Setup menu. In the case of the K3, there are several hardware devices that are supported. These include LP-Pan

and the SoftRock II Lite and the Elecraft P3. To configure the P3 display, please see the next section.

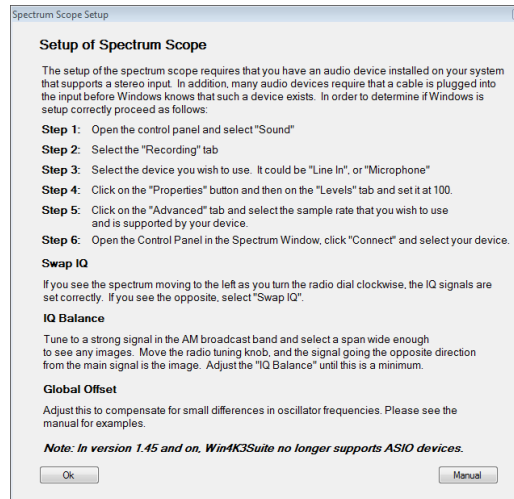


In the Tools Settings menu in the KX3 Suite Control Center window, there is a section called K3 Panadapter. Here you have a choice of LP-PAN or the SoftRock II Lite. If you currently are using the P3, press disconnect and then select either LP-PAN or the SoftRock. Please note that the SoftRock II Lite requires a sound card with a minimum sampling rate of 96kHz. Lower sampling rates will result in the inability to display the spectrum where the radio is tuned to.

Once you have setup Win4K3Suite to connect to the panadapter device or the KX3, click on the Window menu and select Spectrum Scope @ 44.1kHz (or another sampling rate if your sound card supports it).



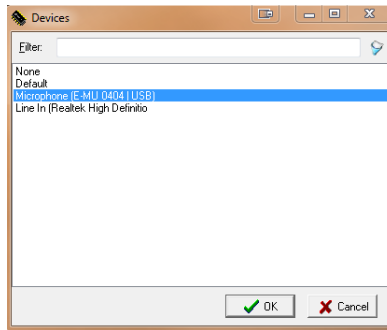
The first time that you do this, you will be presented with a dialog box:



This dialog box presents a condensed version of this manual. Click OK and then the spectrum scope will open. At this point you will have to press the Control Panel button in the lower right hand corner of the spectrum scope window. This will open the control panel as follows:



Click on **Connect** and you will see the following device selection dialog:



Here you will need to select an appropriate driver. Once that is done the spectrum should display. (An example of this is the Microphone (E-MU-0404 | USB))

Spectrum Setup

Software based spectrum scopes take the quadrature signal (IQ out) from a software defined radio such as the Elecraft KX3, and processes the two signals (I = In phase, and Q = Quadrature phase) by digitizing the signal using an audio capture device. From here, the two signals are fed into a fast Fourier transform which translates the signal from the time domain to the frequency domain which is then plotted.

There are a few things that must be done to set up the spectrum scope appropriately. One of these is to make sure that the two signals are equal in amplitude and at 90 degrees out of phase with each other. The other is to make sure that the signals are connected to the right channels of your sound card.

To do this, first set up your sound card as above and then tune the KX3 to signals in the AM broadcast band (nice solid signals here). Zoom in a bit (see usage below).

Once you have some signals displayed, turn the VFO A dial **clockwise**. If you see the stronger signal on the spectrum scope display moving to the left, the signals are fed into the sound card correctly. If you see the strongest peak moving to the right, you will need to click on the "Swap IQ" in the control panel of the spectrum display. In most cases you will need to check the SWAP IQ checkbox. During initial development, the code was set up this way and as it turned out, most people need to check the swap IQ box.

The settings will be saved. If you change sound cards in the future, you may have to change this again.

The next thing you will need to do is to set the balance of the IQ channels. Click the IQ Balance button.

Setting the IQ balance can be done for each band separately. If you do not set this for a particular band, it will use the settings that were used for the last calibration. Please note, that for the KX3 it is best if you do this for all bands. On the K3 with LPPan it is not that critical.

The best way is to use a signal generator such as the XG3 from Elecraft. Another method is to use another transceiver into a dummy load, or have a fellow ham nearby that can generate a constant carrier for you. Lacking these, you can use strong signals such as WWV, or find a LID who is placing a carrier on a DX :).

Turn the VFO dial around a bit and you will notice that the image of the main signal moves towards or away from the main signal as you tune. If the signal moves in the same direction it is a signal not an image.

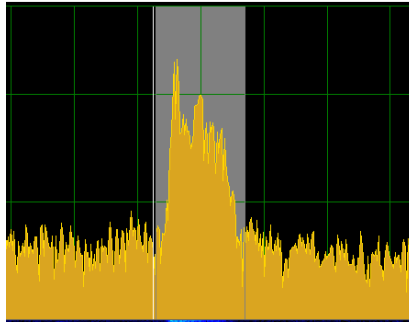
To adjust the balance, move the IQ Gain control until the image peak is minimized. The value should be close to 1.0 +/- 0.1. As you get close, it is better to use the up and down arrows on the keyboard. Next adjust the Phase control, using the keyboard when you get close. Alternate back and forth until the image is completely in the noise and press OK. You can now do this for another band, by changing bands on the radio and repeating the procedure.

Changing sound cards will require a rebalance.

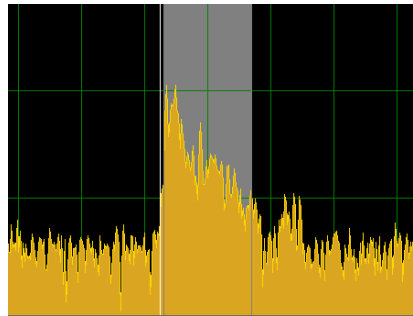
One thing you may notice is lots of artifacts in the signal. Peaks at the center frequency, spikes at various points on the display. What you are seeing is noise pickup on the IQ wires. You will need to either isolate the KX3 IQ signals electrically in some way or wrap some ferrites or change grounding configuration. If you Google "minimizing SDR IQ noise" there are a lot of helpful hints.

Global Offset: Due to variances in electronics, the spectrum scope may not precisely display the signal at the exact point it should be. There can be small differences between devices. The Global Offset allows the spectrum display to be tuned so that the frequency peaks line up with the cursors as they should. The following is an example of an USB signal first at **0 Hz offset** and then at **-300 Hz offset**. With the K3 and LPPAN2, the usual observed offset is minus 350 (-350). Other versions of the LPPAN can have ranges from -6000 to -1200. You will need to experiment a bit with this until you find the correct offset. It is easiest to adjust this on a signal such as WWV or a strong AM signal.

For the KX3 it is zero. Once this is set it will be correct for all modes.

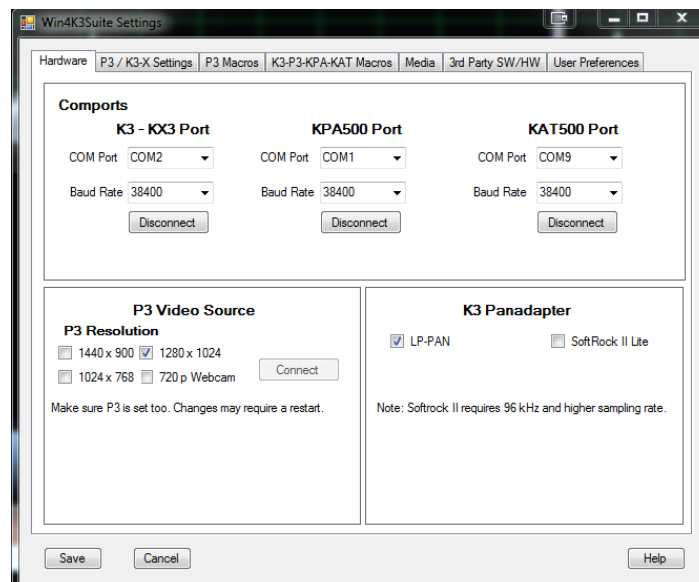


No offset



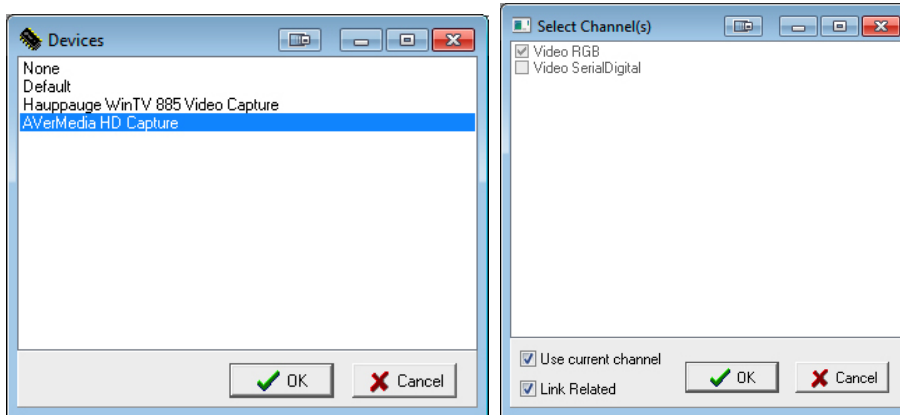
-350 Offset with LPPAN

Installation and Configuration of Video for the P3



If you have an Elecraft P3 Panadapter and wish to use it with Win4K3Suite, you will need to have the SVGA adapter for the P3 and a DirectShow compatible video capture board such as the AverMedia HD Game Broadcaster with a **VGA**

input. An alternative is a 720p webcam. To connect to the video, select a resolution and press the Connect button and you will receive two dialog boxes.



The first allows you to select the Video Capture device, and the second the input for those boards that have more than one input. Once you have selected the port, press Save and the video will connect. You can change the video at any time without affecting any other setting.

If you are using a webcam (not as good as a hardware board!) be sure to click the “720P Webcam” checkbox and position the webcam close to the P3 so that the width of the displayed image fills the display window in the P3 Control window. You should also consider placing a cover over the cam and the P3 so that reflections are minimized.

In the case that you do not wish to use the P3 Control at all close the window and the setting will be remembered.

Use of Third Party Panadapter Software

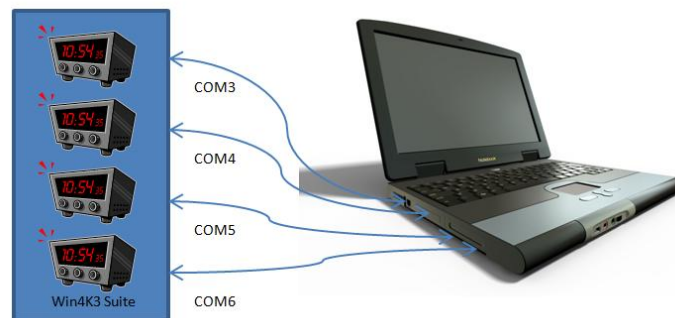
Win4K3Suite also supports third party panadapter software such as NAP3. To use these products, they will need to be connected to the AUX / CAT ports as described in the "Integration of Third Party Hardware and Software"

Integration of Third Party Software and Hardware

Win4K3Suite supports most third party products that can connect to an Elecraft K3 or KX3 through a standard serial port. This includes almost all software packages such as DXLabs, Log4OM, Logger32, N1MM Contest logger and anything that works with OmniRig. In addition it can interface to stand alone hardware packages that have a serial port connection to a computer. Unlike comport sharing programs, each connected device or software has its own dedicated channel to the K3 or KX3 avoiding any contention between them.

Concept

Imagine for the moment that Win4K3Suite is a black box existing outside of the computer. This black box has 4 K3's or 4 KX3's imbedded in it. Each of these K3's has a serial port that you can connect to, just like the real K3. To connect to one of these radios you just connect one of these ports to the computer via a cable and then configure your software to connect to the radio as you always have. Here's the idea:



You can have FLDigi, DX Lbs Commander, N1MM Contest Logging software, or NAP3 Panadapter software connected, each with its own channel to its own radio.

But Win4K3 is not a physical device like in the picture, but rather a virtual device **in** the computer. So then how does one connect Win4K3 up to all of the software?

The answer is using a Virtual Comport Pair. A virtual pair is very much like a NULL Modem cable. It allows connecting two devices together so that the transmit and receive wires are crossed.

When you create a Virtual Comport Pair using various software packages it creates essentially a null modem cable that has one comport defined at one end, and another comport defined at the other end. You connect one end to the software you want to use, telling it it is connected to a K3, and then you connect

the other end to Win4K3 using one of 4 specialized "AUX / CAT " ports in the settings of Win4K3. From this point on, the software thinks it is connected to its own K3 or KX3.

Win4K3Suite supports connecting 4 third party products. These products can read information from the radio. Performance is maintained since the responses to commands have been saved in memory by Win4K3 during its latest round of polling the radio. Thus, high polling rates from software such as N1MM do not directly access the radio but rather the memory. Commands to switch frequencies or modes or any other write commands are executed immediately.

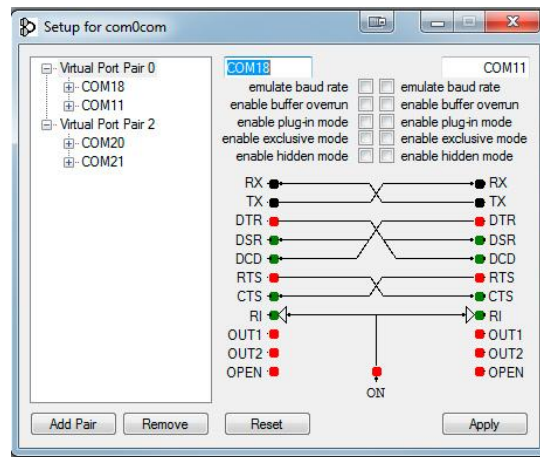
Connecting to Third Party Applications

The first thing you are going to need to do is download a third party Virtual comport program. There are a number of these out there but Win4K3 has been tested with COM0COM, Eltima Virtual Comports and VSPE. Most cost money but COM0COM is free. If you are using a MicroHam router, you can create a Virtual Cable included in their router to accomplish the same thing.

One example which is free is COM0COM which is open source and available at:

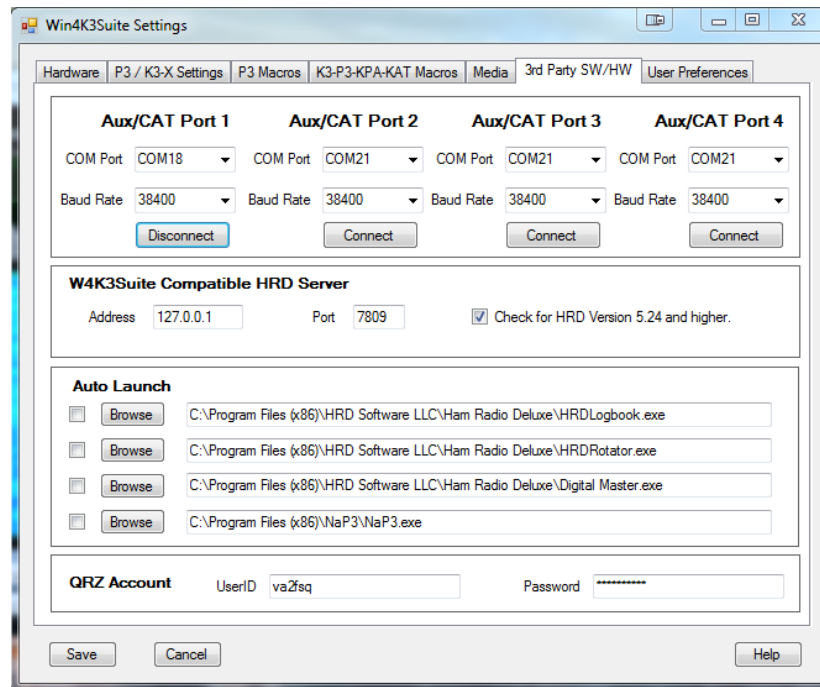
<http://sourceforge.net/projects/com0com/files/com0com/2.2.2.0/>

Be sure to use the version for your operating system. There is one for 32 bit and another "Signed" for 64 bit. Only the version at this link is signed. After you install this, open the Windows start menu and in the com0com folder and run "Setup." (Don't run Setup Command line).



There will be, by default, one pair already defined with weird letter names. You can just click on the names and change the names of the comports to a comport name that does not exist on your system. In the above I chose COM18 and COM11 for one pair and COM20 and COM21 for another.

Once the comport pair is created, start up Win4K3Suite and select Tools, Settings, and the 3rd Party SW/HW tab. You will see the following screen:

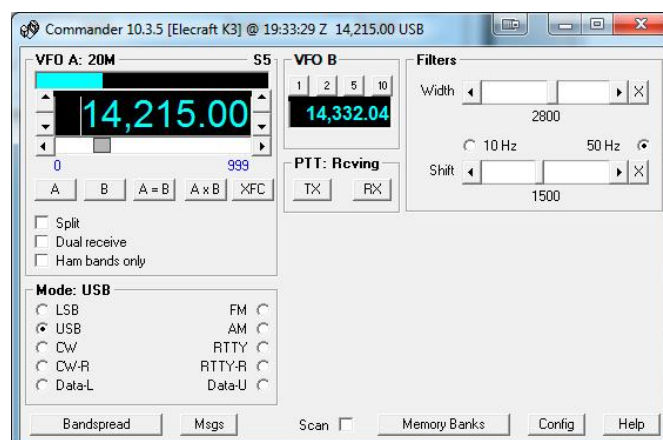


In this screen there are 4 AUX/CAT ports. Each one can connect to a comport of a virtual comport pair. In this example, AUX/CAT Port 1 is connected to comport 18. The others are currently not connected to other virtual port pairs.

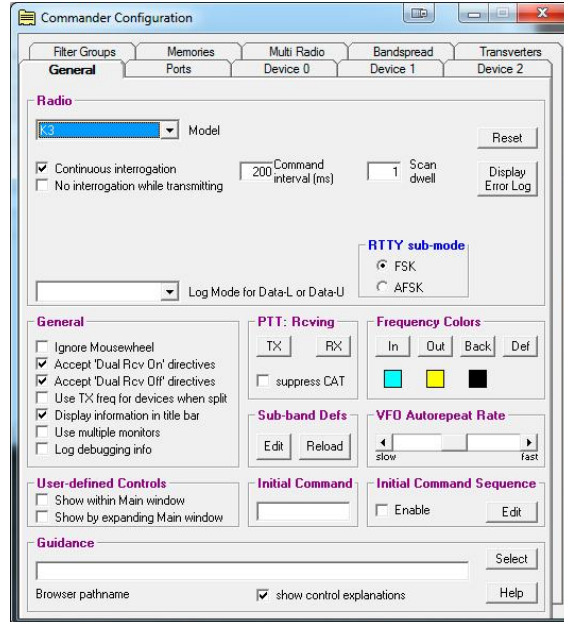
All you need to do now is save the settings and then configure your third party product to connect to comport 11 which is the second comport of the COM11-COM18 pair telling it you have a K3 or KX3 connected to that port.

Example: DXCommander from DXLab Suite

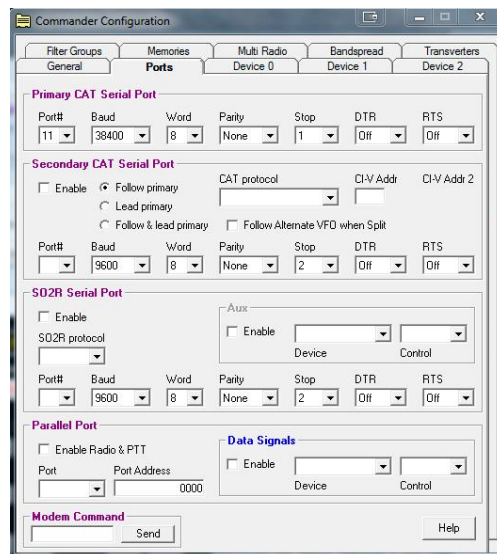
Select **Config** from the main DX Commander screen:



You will then see the following screen. Select the K3 or KX3.



Next click on the Ports tab and enter Port# 11 corresponding to the serial port of the virtual comport pair you created above.



Make sure that DTR and RTS are set to OFF. Win4K3 Suite does not support hardware hand shaking at this time.

Exit out and you should be connected to DXCommander. From the point of view of DXCommander, all it sees is a K3 connected to its comport. Therefore everything that is supported in DXLabs Suite also works.

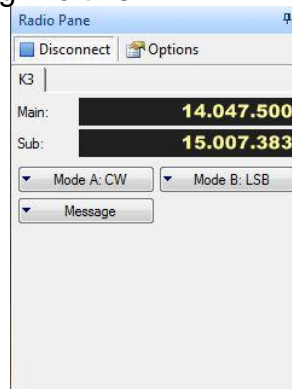
You can use the same principle for any other third party software such as N1MM, DX4Win and so on.

Some packages such as FLDigi and LOG4OM use OmniRig. You apply exactly the same principle as above.

Connecting to Ham Radio Deluxe Logbook and DM780

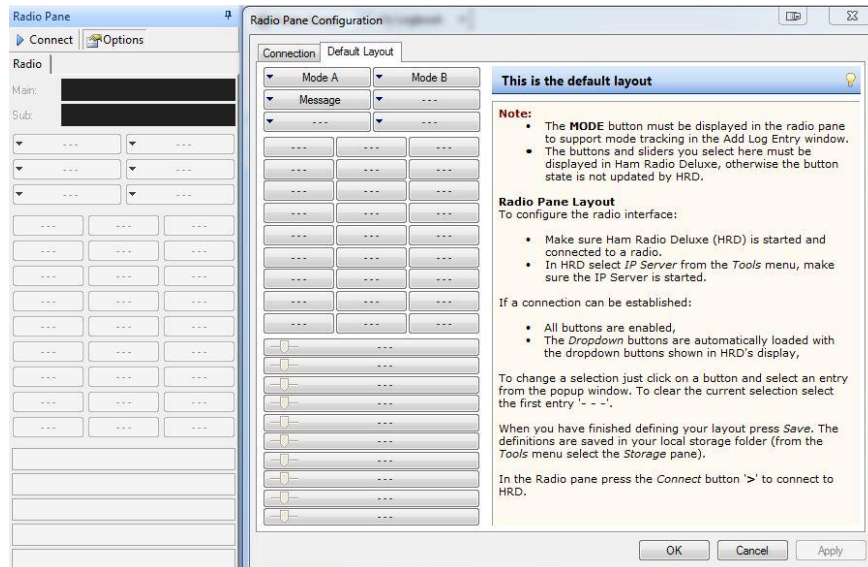
Win4K3Suite has a Ham Radio Deluxe compatible TCP server that can connect with the log book and DM780. In order to use this and track the radio modes you must first connect the **HRD Radio Control program to your radio** and run the HRD logbook. You must do this for the K3 or KX3 or if you have both radios you must do it for both.

Once you are connected open the radio pane in HRD Logbook (View Radio Pane). You will see something like this:



There may be other buttons displayed but Win4K3Suite only supports the default buttons and drop downs at this time. For the K3, these are Mode A, Mode B, and Message. For the KX3, they are Mode A and Mode B. If you have other drop downs defined you **MUST** remove them from the radio pane.

To change the drop downs, click on the Options Tab in the Radio Pane. At that point you will see the following.



If there are any other buttons than this you must remove them. If any are missing, you must add them. The result **MUST** be exactly as shown.

Click OK and if all is well you will see Mode A and B showing the mode of the radio. If you cannot get the Radio Pane to show just the fore mentioned buttons then you will not be able to connect with Win4K3Suite. If you cannot change the buttons as happens in some cases please contact support@va2fsq.com. This is solvable just a little more work is involved.

Once you are successful, close HRD Control and HRD Logbook. Start Win4K3Suite and start HRDLogbook.exe (In the HRD software directory).

To make things simple you will want to create a shortcut on your desktop from the executable in the HRD folder or make an entry in Settings, Third Party HW/SW Auto Launch. This way the logbook will start immediately when you start Win4K3Suite.

Using MicroHam Routers

Win4K3Suite will work with the MicroHam routers. Please see detailed instructions here: http://va2fsq.com/?page_id=798

Integration with CW Skimmer

CW Skimmer is an extremely useful tool for decoding CW transmissions over a wide range of frequencies. It is especially useful for working DX pileups, where you can see where the DX last worked a QSO.

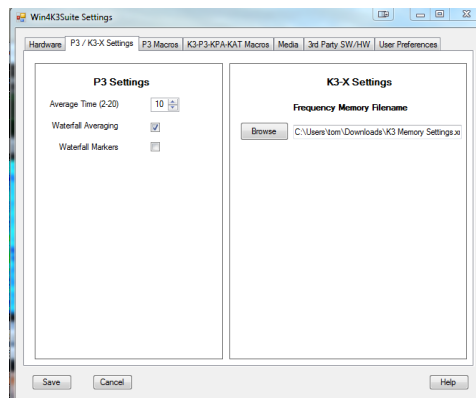
By default CW Skimmer will QSY to a spot using VFO A. However, when you are working DX you are usually in SPLIT mode. So if you click on a spot with

CW Skimmer, you will lose the DX transmitting frequency. Win4K3 provides a way to translate all QSY's from VFO A to VFO B. To enable this function, connect CW Skimmer to AUX/CAT port 4 and click the CW Skimmer check box. This will inform Win4K3 that CW Skimmer is connected and it will enable the VFO A to VFO B QSY's. By default, it will use VFO A but in the Tools menu of the radio control screens there is a toggle called...

Settings Menu in Depth

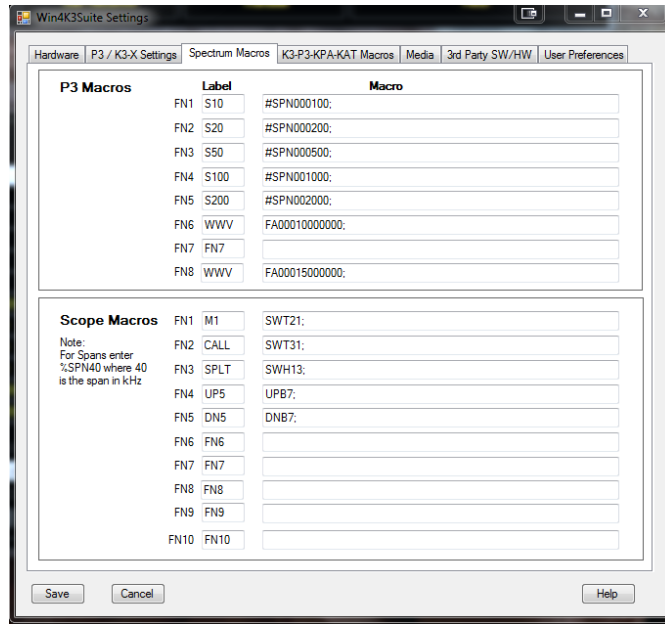
P3 / K3-X Settings

Here you may select averaging for the P3. Also you can select a file for use with the Frequency Memory Window.



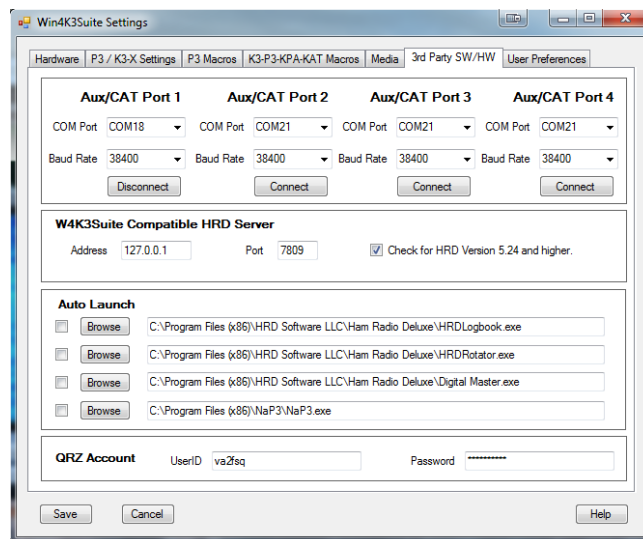
Spectrum Macros

Here you can specify macros for the P3 and the spectrum scope window such as Span etc. You can change the labels as well. These will appear on the P3 and spectrum scope windows window in the lower left. You can use any macros you wish. They are not limited to the P3. Please see the section on Programmable Macros for more details.



Third Party SW / HW Tab

In this section you can specify the settings for the AUX / CAT ports as described in Connecting to Third Party Applications.

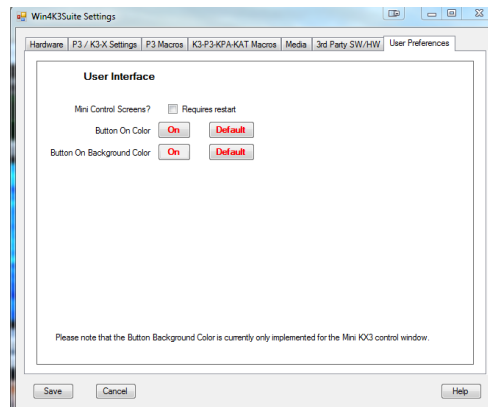


The Win4K3Suite Compatible HRD Server provides the address and port of the HRD Logbook server. If you are using an old version of HRD, uncheck the check box shown.

Auto Launch: This provides a facility to automatically launch up to 4 third party programs when you start Win4K3. You can check or uncheck the check boxes to enable a particular Launch as you deem necessary.

QRZ Account: This is for lookup of call signs in the CW - FSK-D - PSK terminal.

User Preferences: This tab allows you to select Mini Control screens as well as the color of the buttons that appear in Win4K3Suite.



Limitations of the Software and the Elecraft API

There are a few limitations in Win4K3Suite due to some missing functionality in the Elecraft API. In particular, it is not possible to physically change the receive or transmit equalization at the radio and have it updated on the K3 Control Window. The necessary commands to obtain this information directly are not present in the K3 serial programming interface and the work around requires a large amount of communications with the K3. It would be detrimental to performance to always keep this updated. Due to this, the equalizer is reset to 0 across all audio bands when the software is started. As long as changes are made only in the K3 Control window, the equalizer display will remain correct. The same limitation also applies to the coarse / fine-tuning control.

The other limitation concerns obtaining the shift of the subreceiver IF. Currently, this functionality is missing so it is not possible at the present time to change this for the subreceiver independently. If you wish to have different filter settings for the subreceiver, set them up on the main receiver and then double click on the A>B button. This will transfer all settings from the main to the sub. You will then need to subsequently change the main receiver settings. This behavior has been reported to Elecraft and hopefully there will be an update to the API soon.

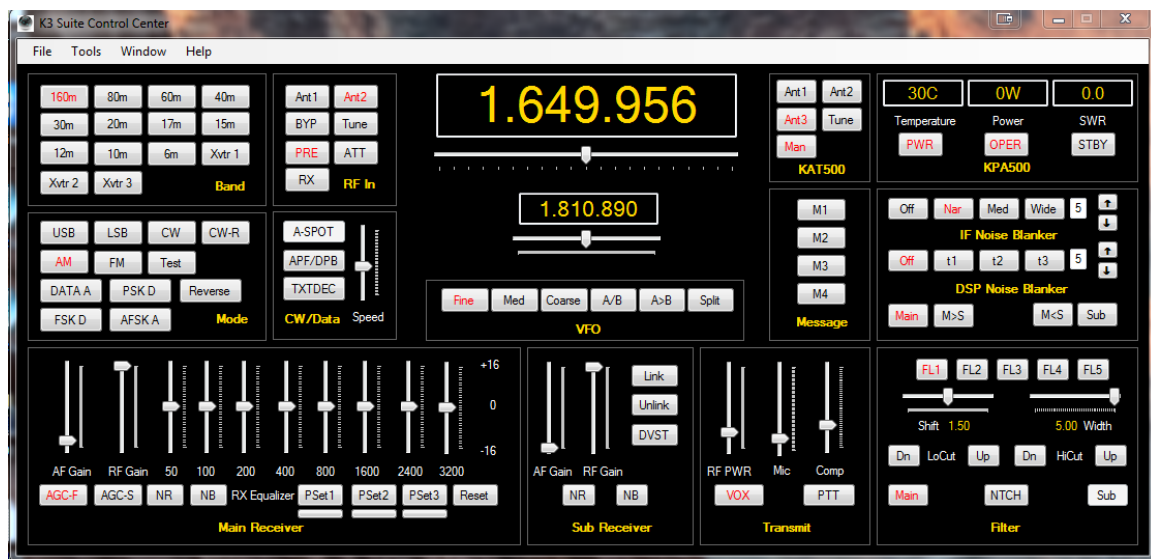
Finally, command for turning on Text Mode for CW, FSK and PSK and adjusting threshold for the built in decoder are not available on the KX3.

Part 2: User Interface and Functionality

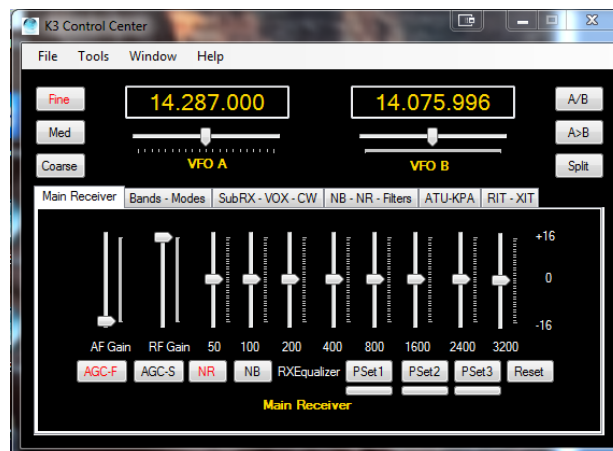
Radio Control Screens

Win4K3Suite provides an easy to use interface to the Elecraft K3 and KX3 radios, integrating almost all functionality including that of the KPA500, the KAT500 and the KXPA100. There are two possible radio control screens: the full sized interface and the Mini-Screen. Switching between them is accomplished by going into Tools Settings User Preferences and checking or un-checking the "Use Mini Control Screens box. A restart is required.

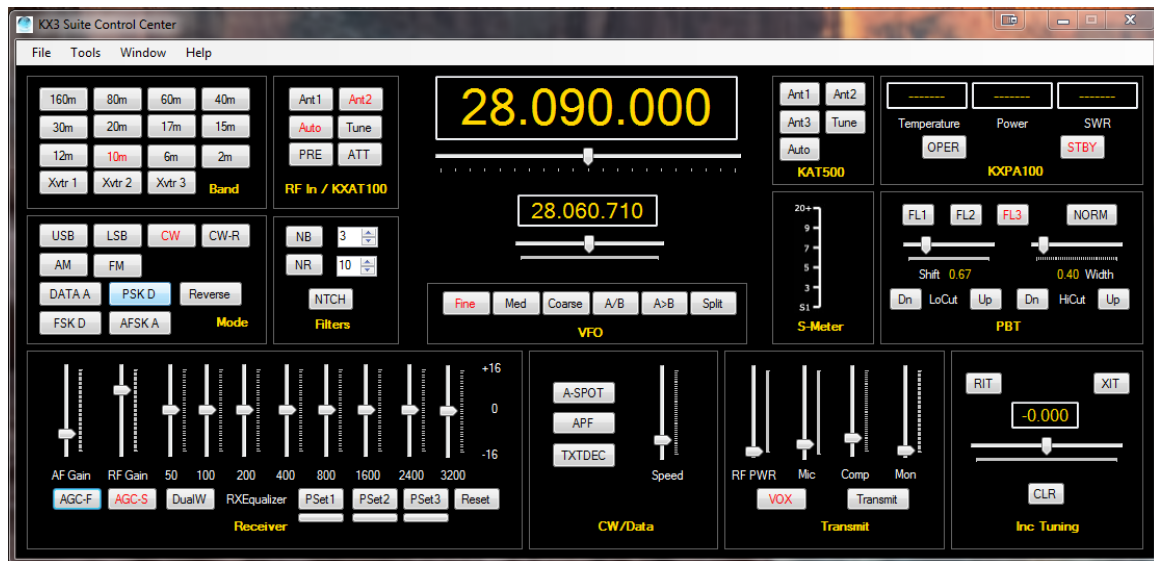
Most of the buttons are self-explanatory but there are a few sets of controls that can use further explanation.



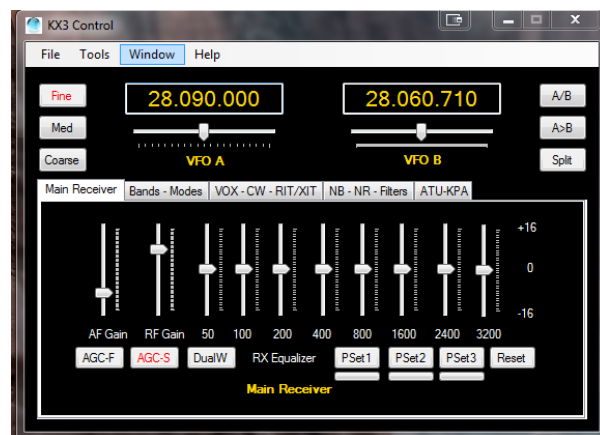
Full Sized Control for the K3



Mini-Screen Controls for the K3



Full Sized Control for the KX3



Mini-Screen Controls for the K3

VFO A and VFO B Tuning

The radio may be tuned by sliding the slider to the left or right and then releasing the mouse. Tuning rate is governed by the buttons of Fine, Med, or Coarse. If you use the mouse wheel after selecting the slider, the wheel can be continuously turned to change the frequency.

By default **Fine** tuning changes the frequency by one Hz if you use the keyboard to slide the slider. If you use the mouse wheel each "tick" will increase the value by three times the slider increment.

Medium tuning will change the frequency in 10 Hz increments and **Coarse** by 100 Hz increments. In all cases the mouse wheel will increase this by three times.

Double Clicking the VFO windows will pop up a direct frequency keypad as shown here:



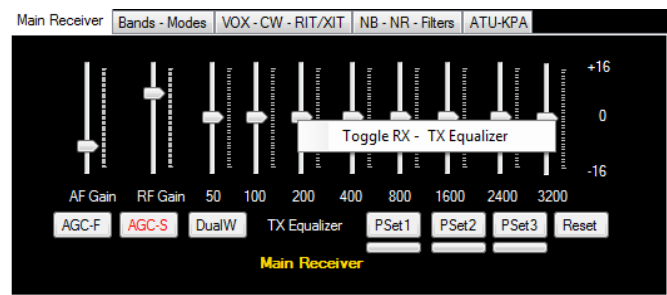
You can use the keyboard or the mouse to enter a frequency. Note that the frequency is in kHz.

You may also click in the VFO A or B frequency digits directly and use the arrow keys or mouse wheel to individually change the values of the digits. Note, click slightly to the left of a digit.

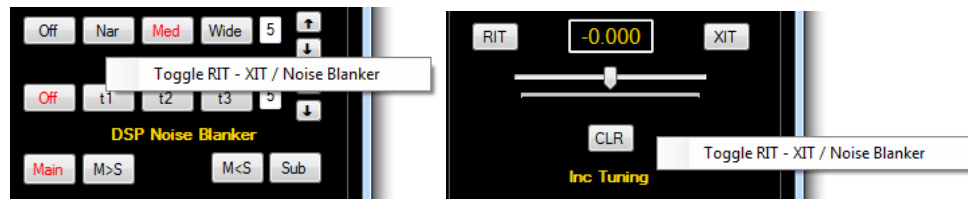
Right Clicking in the VFO B frequency display allows you to select various "Up" and "Down" split frequencies automatically.

Hidden Controls Accessed with a Right Click of the Mouse or Double Clicking

There are several controls in Win4K3 that can have a dual function. For example, the Equalizer can be toggled between receive and transmit equalization by right clicking the equalizer

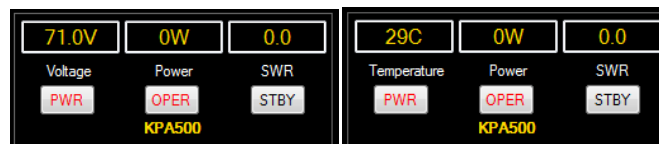


Another example is Right Clicking the Noise blanker section in the K3 Control screen



Some of the others include right clicking on VFO B to select a split frequency which will also automatically copy settings from VFO A to VFO B and enter Split mode.

For the KPA500 and KXPA100 double clicking the Temperature box will cycle through Temperature, Voltage, and Current.

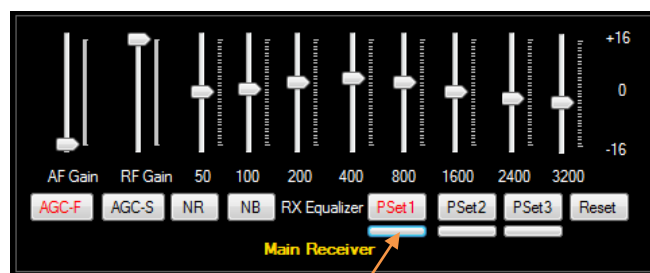


In addition, right clicking anywhere in the KPA500 control will allow you to set the fan settings on the amp.

Receive and Transmit Equalizers

Win4K3Suite provides access to the receive and transmit equalizers built into the K3 and KX3. Unlike many other controls however, the setting of this functionality at the radio itself is NOT reflected in the program. Only setting the equalizer in the program is supported since there are no commands in the Elecraft programming language to read the values. However you can dial in a setting for the TX equalizer and RX Equalizer and save these settings. When you exit Win4K3 the settings remain in the radio. The next time you start Win4K3, it will first reset the equalizer settings on the radio to zero but then load the values which were set when you exited the program.

You can save up to 3 equalizer settings for each of the equalizers in Win4K3.



Save Button

For example, if you usually have a TX equalizer setting for your particular microphone, first write down the settings. Then start Win4K3. When the program starts, the equalizers will be reset to zero. Next right click in the RX Equalizer section to select TX equalizer and dial in your settings. Press the little bar under one of the presets and this will save the settings in the Win4K3Suite settings file and the preset button will highlight.

This setting will remain in the radio upon exit of Win4K3. The next time you connect, Win4K3 will reset the equalizers but then load the last Preset used for both the TX and RX equalizers automatically.

If you only use your TX equalizer to set a permanent equalization, you will never need to worry about this again. It will always be loaded when you start Win4K3 Suite.

Filters and Passband Tuning

Win4K3Suite allows full control of the filters in the radio. In the case of the KX3, there is more functionality than in the radio itself since it does not consider the Tech Mode settings for Passband, instead providing all functionality irrespective of this setting.

Band Stack Registers

New to version 1.748 are Band Stack Registers. By default the K3 or KX3 will remember the previous frequency and mode when you change the band. Band stack registers are per band memories that allow you to store up to 4 different frequency / mode pairs per band.

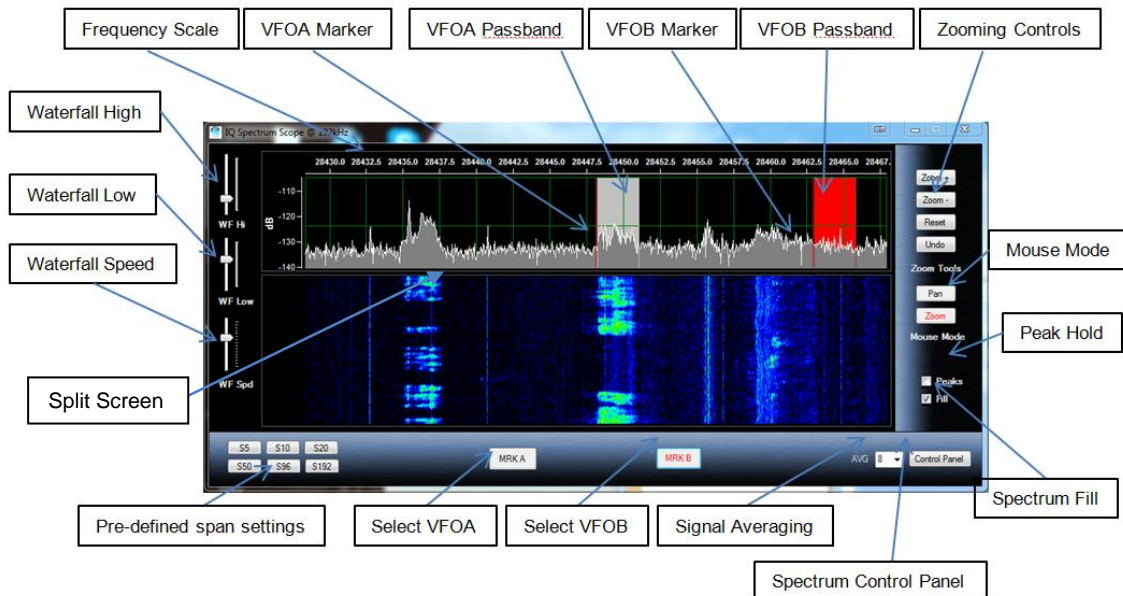
To use this feature, clicking the Band button that you are currently on, will store the frequency and mode you are currently using, and then cycle through up to 3 additional frequency / mode pairs. The first time you use this on a particular band, a press of the band button will store the current frequency and mode. If you then tune to a different frequency and mode on that band, and then press the Band button again, it will store the new pair and then go back to the previous pair. Up to 4 pairs are available per band.

You can also right click in the Band section and then select a frequency / mode pair from the popup menu.

The Win4K3Suite Spectrum Scope

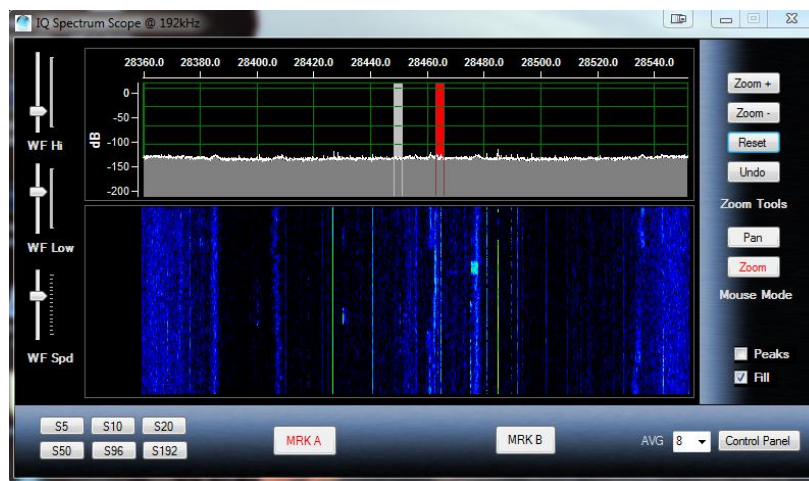
The Win4K3Suite spectrum scope offers an easy to use spectrum scope with no need to worry about many of the technical aspects of Digital Signal Processing. The display for the KX3 and LPPAN automatically takes into account all offsets for the various modes, including the Weaver Shift in the KX3.

Control Layout



*** Note: In version 1.736 the Pre-defined span settings are replaced with programmable macros. These can be set in Tools, Settings, Spectrum Macros.

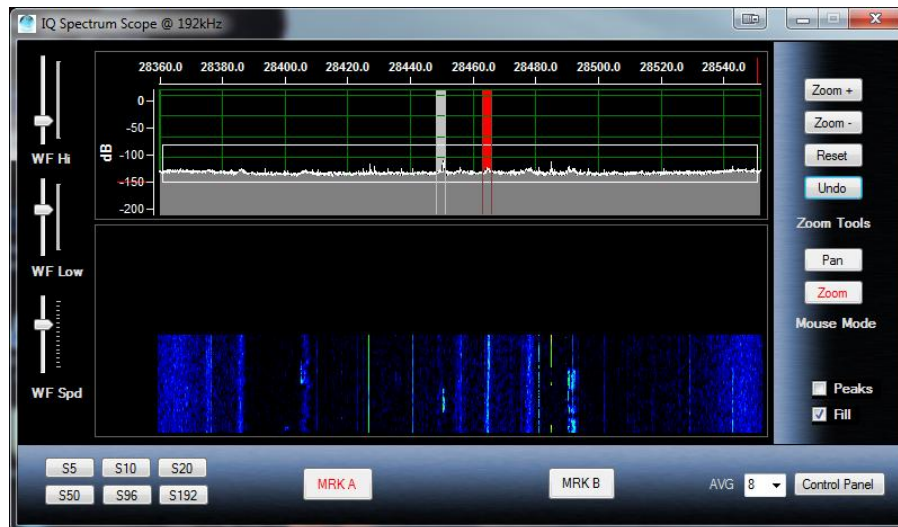
When you first start the spectrum scope you may see something like the following picture. If not press the "Reset" button.



Zooming and Panning

The spectrum scope has two modes for the mouse: Zoom and Pan. The Zoom button will allow you to zoom into parts of the spectrum using the mouse.

For example you can use the mouse to draw a box around the area you wish to look at as shown below:



It is useful to make a selection across the whole spectrum so that peaks are closer to full scale as has been done in the above picture. You can also select a small section to really zoom into the signals.

You can use the mouse in this fashion at any time as long as the Mouse Mode Zoom button is active. If you make a mistake, you can press the "Undo" button which will revert back to the previous zoom ratio.

Clicking Zoom + and Zoom -, will zoom in the X Axis, increasing or decreasing the span of the display.

In addition to the Zoom, there is a Pan button. This allows you to move the spectrum up and down by clicking and holding the mouse button in the spectrum display. In addition, you can use the mouse to grab the Frequency scale at the top of the spectrum and move it left to right to pan the spectrum over the whole frequency range.

QSY to Signal

Double clicking in the spectrum window will QSY to the signal of interest. This is possible for both VFO A and B by selecting either the MRK A or MRK B buttons. The VFO Passbands reflect the actual bandwidth and shift settings on the radio.

Right clicking on the spectrum allows you to set a tuning rate for the radio using the mouse wheel and also allows you to "Jump Up" or "Jump Down" to even 500 Hz settings. You can also set a "Snap" which will always QSY to even 100 Hz boundaries.

Waterfall Settings

The WF Hi setting adjusts the colors for the signal peaks, while the WF Low adjusts the colors for the background. The WF Spd adjusts the waterfall scrolling speed. All settings are saved by band.

Signal Averaging

The AVG box allows setting the averaging rate for the spectrum from 1 to 16. The higher the value the slower the spectrum becomes but the noise is reduced in the process. A good value is either 4 or 8. A value of 16 can be used to dig out very weak signals using the waterfall. In this case adjust the waterfall Low setting to just bring up the background until the noise starts to show.

Other Controls

The Split Screen control allows you to resize the relative sizes of the spectrum and waterfall.

Peaks will display the highest signal level in the display and hold them until is is turned off.

Fill fills the spectrum for a more pleasing display.

Spectrum Control Panel

Most of the control in this screen are self-explanatory.

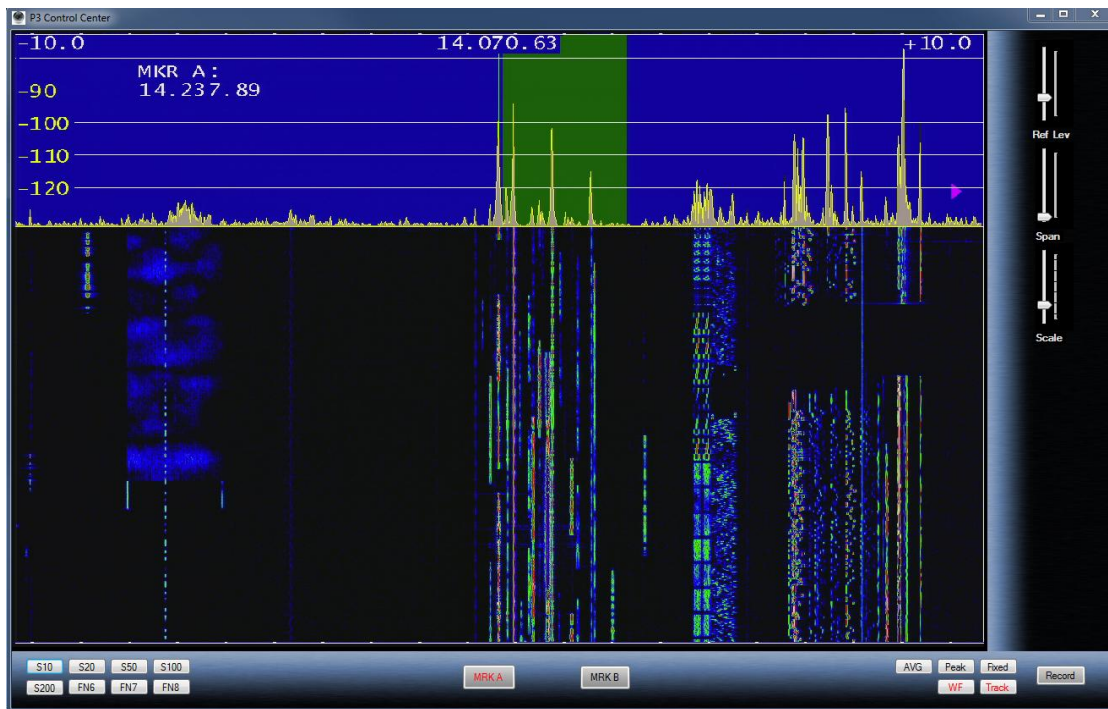


Spectrum Spots

In version 1.720 spots from the ClubLog screen now appear as triangles beneath the waterfall. Hovering the mouse above the triangle will display the call sign or call sign DE Spotter depending on the setting in the spectrum control panel. Clicking on the triangle (64 bit version) will QSY to the spot. In the 32 bit version double click above the spot in the waterfall.

Using the P3 Control Screen

Win4K3Suite offers a unique point and click interface to the Elecraft P3 Panadapter if you install a hardware video capture board.



The P3 Control Window supports recording of real time spectra to disk and has 8 configurable macros usable for the P3 or the K3. This will be found in the Tools - Settings - P3 / K3 Macros tab.

Tracking and Fixed modes are available. Operation is very similar to the P3 itself.

K3-X Frequency Memories

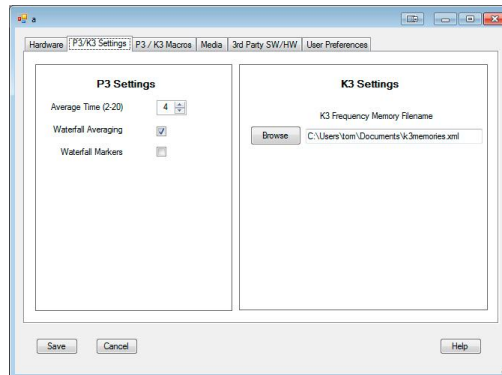
Win4K3Suite provides an interface to the K3 and KX3 frequency memories. This is accessed via Window – Frequency Memories.



ID	Label	Description	VFO A	Mode A	VFO B
0	80 CW	80M CW DX Window	3.505	CW	3.51
1	80DIG	80M RTTY/Data Window	3.59	DATA	3.595
2	75MPH	75M DX Window	3.79	LSB	3.8
3	40 CW	40M CW DX Window	7.05	CW	7.01
4	40DIG	40M RTTY/Data DX Window	7.04	DATA	7.045
5	40MPH	40M Phone Split Window	7.125	LSB	7.085
6	30 CW	30M CW	10.105	CW	10.11
7	30DIG	30M RTTY / Data	10.13	DATA	10.14
8	20 CW	20M CW DX Window	14.025	CW	14.03
9	20PSK	20M BPSK	14.07	DATA	14.07
10	20FSK	20M RTTY	14.085	DATA	14.09
11	20MPH	20 M Phone	14.195	USB	14.195
12	17 CW	17M CW	18.09	CW	18.095
13	17DIG	17M RTTY/Data	18.1	DATA	18.105
14	17MPH	17M Phone	18.115	USB	18.115
15	15 CW	15MCW	21.025	CW	21.03

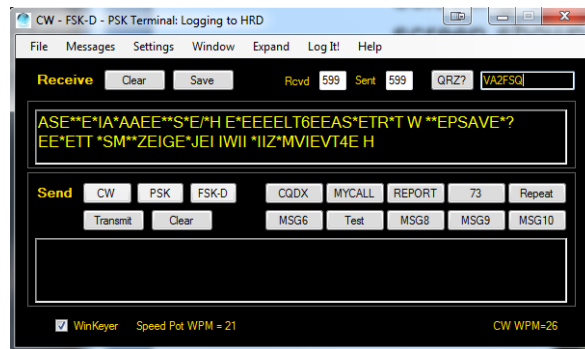
When the window is displayed, pressing a button will do a QSY for both VFO A and B and set the appropriate mode. Filter settings will be those set as a default for the mode in question or the current settings.

In order to use this feature, you must use the Elecraft K3 Frequency editor that can be downloaded at the Elecraft site. Once you have setup your memories, **save them to the radio**, and then save them to a file and specify this file in the Settings menu as indicated below. Win4K3Suite always accesses the memories directly from the radio.



CW - FSK-D - PSK Terminal

The Elecraft K3 and KX3 have a built in decoding function for CW, FSK-D, and PSK digital modes. Win4K3Suite provides this functionality in the program by selecting **Window then CW - FSK-D - PSK Terminal**. By default, the basic screen shown below will open.



Clicking on Expand will reveal various controls as follows:



The "**Settings (K3)**" section allows you to turn on text decode, and set the threshold for decoding of signals. Please note that this is only available in the K3. In addition, if you are using a MicroHam router, the controls are slow to operate.

A-SPOT allows spotting of CW, FSK (manual) and PSK signals. You can toggle Auto spot or Manual spot by right clicking on the button.

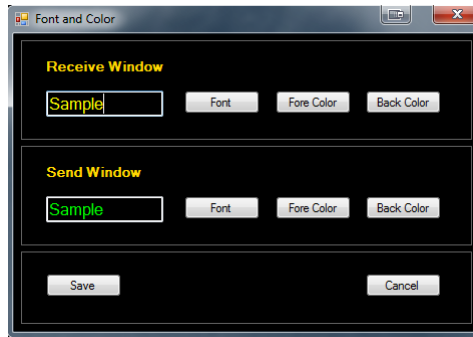
APF/DPB allows settings of audio peaking filter or dual pass band filters.

CW CPM sets the keyer speed

A-WPM allows setting of auto words per minute keyer speed when used in conjunction with CW Skimmer's telnet server.

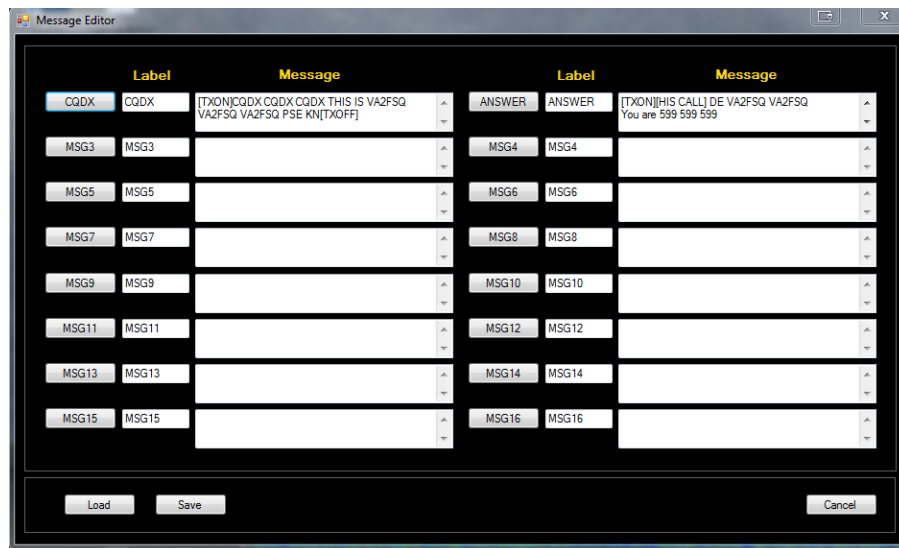
Settings - Fonts

Selecting this option will open the font window allowing you to change how the terminal mode will appear.



Messages

Win4K3 allows you to set up to 10 messages per file. Clicking on Load will load an existing message file into Win4K3. Clicking on Edit will provide this screen:



You may enter a Label for the button and a message you want transmitted when the button is pressed. There are a number of special tags that you can use which will perform specific functions.

[HIS CALL] This tag will be replaced by the call sign that appears next to the QRZ button.

[TXON] will start transmitting.

[TXOFF] will stop transmitting.

All carriage returns in the message will be sent using the appropriate translation depending on mode.

Logging from the Terminal Screen

It is possible to log QSO's directly from the terminal screen to an ADIF file, or DXKeeper or HRD Logbook. To configure this, select Settings, Logging from the terminal screen. There are three options:

ADIF Logging: If you select this, the QSO is logged to an ADIF file that can be imported into most logging programs.

DXKeeper Logging: If you select this, the QSO is logged to DXKeeper. Please note that DXKeeper must be open for this to work.

HRD Logbook Logging: Here you must install the Microsoft Access Database Engine 2010 available here:

<https://www.microsoft.com/en-ca/download/details.aspx?id=13255>

However there are some details that are necessary to resolve depending if you have Microsoft Office on your computer and whether you are using the 32 bit or 64 bit of Win4K3.

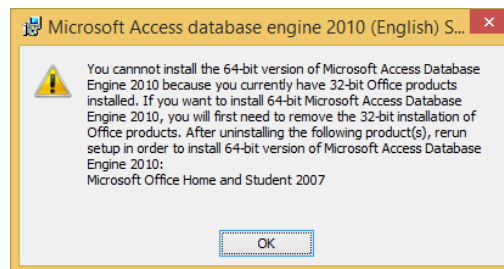
HRD Logging without Microsoft Office on your computer: Click on the button in the link. You will be asked if you wish to download the 32 bit version, AccessDatabaseEngine.exe or the 64 bit version, AccessDatabaseEngine_x64.exe. Select the version you need, download and install. Nothing further needs to be done.

HRD Logging with Microsoft Access on your computer: Here it gets a little more complicated. There are a few scenarios depending on whether you have Microsoft Office installed on your computer and whether it is the 32 bit version of Office or the 64 bit version of Office. Home and Student Office is always 32 bit. The other editions of Office may be 32 bit or 64 bit. You can try and determine which version is installed by opening it and selecting Help and in the search field type "Help About" and it will tell you how to perform this action. If you can't find it, it doesn't matter. Just pick one of the following scenarios:

HRD Logging with 32 bit Win4K3Suite and 32 bit Microsoft Office: Click on the button in the link. You will be asked if you wish to download the 32 bit version, AccessDatabaseEngine.exe or the 64 bit version, AccessDatabaseEngine_x64.exe. Select the 32 bit version, download and install. Nothing further needs to be done.

HRD Logging with 64 bit Win4K3Suite and 64 bit Office: Click on the button in the link. You will be asked if you wish to download the 32 bit version, AccessDatabaseEngine.exe or the 64 bit version, AccessDatabaseEngine_x64.exe. Select the 64 bit version, download and install. Nothing further needs to be done. If you get an error see below.

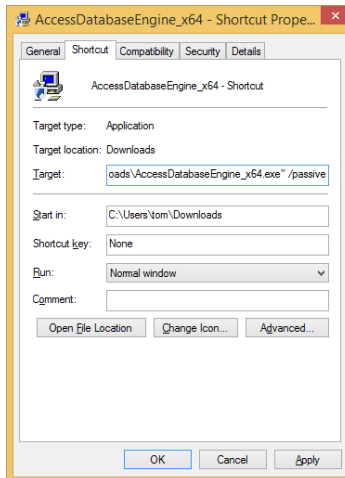
HRD Logging with 64 bit Windows and 32 bit Office: Most of the time this will be the situation when you try to install the Access drivers. Download the 64 bit version of the MS Access Database Engine and try to install it. If you have 32 bit office you will get an error. This is the error:



If you don't get an error then you have 64 bit office installed and all is well. However, the usual situation is that Office is 32 bit.

Microsoft made a blunder when they wrote the driver installation software here and the install will not allow you to install 64 bit Access drivers on a system with 32 bit Office. However it can be done by adding a command line parameter: /passive to the installation program as follows:

- 1) Download the 64 bit version of MS Access Database Engine.
- 2) Open the folder where you downloaded the file.
- 3) Right Click on the file and select "**Copy**"
- 4) Next Right Click in the folder and select "**Paste Shortcut**"
- 5) Next Right click on the shortcut you just created and select **Properties**. You will see the following:



6) In the Target field, you will need to first put double quotes around the existing "Target" entry. For example if it was

`c:\Downloads\AccessDatabaseEngine_x64.exe`

change it to `"c:\Downloads\AccessDatabaseEngine_x64.exe"`

Next add the `/passive` parameter to the end. What you will end up with is

`"c:\Downloads\AccessDatabaseEngine_x64.exe" /passive`

Click Apply then OK.

7) Double click the shortcut and the install will run minimized. When you open the Icon in the task bar it will show that it has successfully completed.

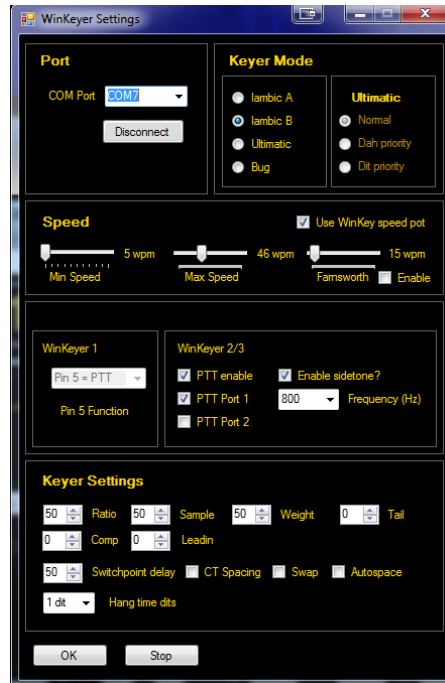
Start Win4K3 and you will now have access to HRD Logbook logging.

For all HRD Logging scenarios, open HRDLogbook.exe and then in Tools, Configure, Sharing, click the checkbox to allow automatic refresh on new records. Without this, HRD Logbook will accept the entries from Win4K3 but will not display them until you do a Refresh in HRDLogbook.

K1EL WinKey Support

Starting in Win4K3Suite version 1.782, support for K1EL's WinKey is built in to the terminal. Although the built in, K3 - X software based support of text to CW works quite well, it uses the same serial port as rig control and the spectrum scope. This can result in some latency for CW transmission. WinKey gets around this by using a separate serial port for communications.

The first thing you will need to do to use the WinKey support is to go into the terminal settings and select "Settings - WinKeyer". You will then see this screen:



You can then select a comport and then click on connect. From this point on, WinKey will be used for CW. Please note that Win4K3Suite will provide all of the settings for the WinKey so any existing settings will be replaced when the interface is started.

It is beyond the scope of this manual to discuss all of the features of WinKey. Please see the K1EL website for in-depth information. However, the most important item is the words per minute settings. There are two possibilities: One is using the Speed pot on the WinKeyer itself. Make sure that this option is selected ion the settings if you wish to use this. The other is to use the speed settings in Win4K3Suite itself. You can de-select the "Use WinKey speed pot" if this is your desire.

ClubLog Spotting Window

I'm a big fan of Club Log. It's easy to use, you don't have to mess with complicated filters and it just works. What was missing though, is a way to just point and click on the spots and have your radio tune to the DX. Thus when Michael Well announced that he was making available a means to obtain your DXCC Matrix of worked and new spots via a programming interface, I know I

needed this. So CLSpotter was born. Full QSY capabilities are integrated into Win4K3Suite as well.

Call	Spotter	Comment	Freq	Band	Dxcc	Date	Status	LOTW
W1AW/1	#	15 dB 22 WPM...	-11.7	2	UNITED STATES OF...	08:12:2014: 23:19:56	New	LOTW
W1AW/1	#	15 dB 21 WPM...	-11.7	2	UNITED STATES OF...	08:12:2014: 23:20:14	New	LOTW
K1AY	#	15 dB 19 WPM...	9.2	2	UNITED STATES OF...	08:12:2014: 23:20:26	New	
W5AT	#	10 dB 36 WPM...	-8.7	2	UNITED STATES OF...	08:12:2014: 23:20:29	New	
ZL1RS	/N5BEK	hrd cq dx 539 in ...	50103.0	6	NEW ZEALAND	08:12:2014: 23:19:32	New	
IU1YT	DD3SP	cq nice sig ...	10122.5	30	ARGENTINA	08:12:2014: 23:19:31	New	LOTW
5P8VW	DJ8VW	simplex EU125 O...	3780.0	80	DENMARK	08:12:2014: 23:20:19	New	
9M2AX	F2DX	CQ	3501.5	80	WEST MALAYSIA	08:12:2014: 23:19:31	New	
JH1MDJ	HI75BR	trx qao 73	24939.0	12	JAPAN	08:12:2014: 23:19:32	Verified	LOTW
W1AW/1	JF2IWL	...	21335.0	15	UNITED STATES OF...	08:12:2014: 23:19:34	Verified	LOTW
W1AW/9	JG1ULT	cq	21305.0	15	UNITED STATES OF...	08:12:2014: 23:19:34	Verified	LOTW

How it Works

CLSpotter works by downloading your DXCC matrix from Club Log using your user id, password and email address. Once this is downloaded, it connects to a DX Cluster and then does a lookup in your matrix to see if an incoming spot is new, worked, confirmed or verified. According to some simple filters, it will display these spots in a table.

Clicking any spot in the table will immediately do a QSY to the frequency of the spot. In addition if you are using the LP-Pan or KX3 spectrum scope, then moving the mouse slowly over the waterfall will show any spots that are in the frequency range of the panadapter. if the CW - FSK-D -PSK Terminal is open, the call sign of the spot is entered into the QRZ field.

Setup

The first time you use Club Log Spots (found in the Windows menu from any control screen), it will bring you directly into the Control Panel. There are 4 main sections to the control panel.

The screenshot shows a window titled "clubLogControlPanel" with four main sections:

- Club Log Account:** Contains fields for "User ID" (va2fsq), "Password" (masked with dots), and "Email Address" (support@va2fsq.com).
- DX Cluster:** Contains fields for "Call sign" (va2fsq), "DX Cluster" (dropdown menu showing dxcluster.us), a checked checkbox for "Use custom cluster?", "Address" (127.0.0.1), and "Port" (23). A note at the bottom says "Changes require restart".
- Entity List:** Shows "Last Update" as 2014-12-04 10:2 and an "Update" button.
- Highlighting Preferences:** Shows color selection buttons for "New Spots", "Confirmed", "Worked", and "Verified".

At the bottom of the window are "Ok" and "Help" buttons.

Club Log Account: This is where you must put your Club Log credentials that you are currently using. If this is not correct, then there will be no spots available.

DX Cluster: Here you must provide your call sign and pick one of the DX Clusters. In addition to the pre-defined clusters, you can add your own cluster by specifying the ip address and port of the cluster.

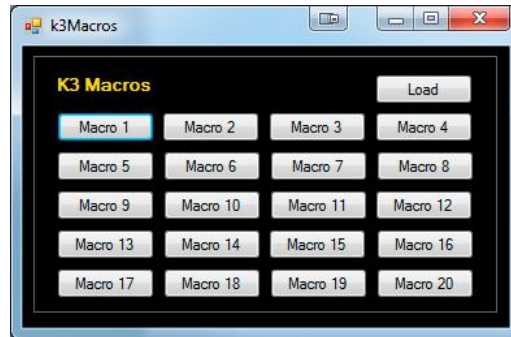
Entity List: The entity list is a list of DXCC's. This is used to provide the name of the country in the spot window. This table is automatically updated once a month and the first time you run the program. If you wish to update this sooner, press the Update button.

Highlighting Preferences: Here you can select the colors you would like to use for the different spots.

Part 3: Advanced Topics

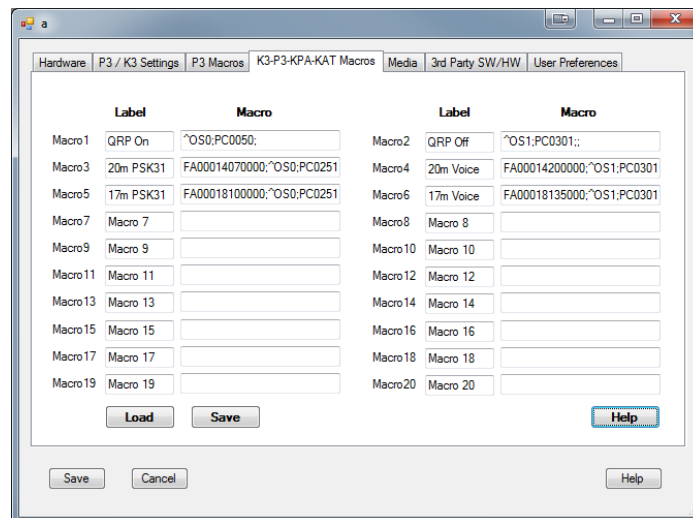
Programmable Macros

Win4K3Suite supports 20 programmable macro buttons.



Each button can be programmed with a mix of K3, KX3, KPA500, P3 and KAT500 commands. Sets of macros can also be saved to a file and loaded allowing different sets depending on needs.

Macros are setup in the Tools Settings menu under the K3/P3/KPA/KAT Macros tab.



Macros in Win4K3Suite can use almost any SET commands for the K3, P3, KPA500 and KAT500. They can be mixed together in the same macro according to the following rules:

K3- KX3 Macros:

You can use K3 macros using the normal K3 commands such as FA00014100000; i.e SET frequency of VFO A to 14100000 Hz.

The software uses the K31 and K22 extended modes. If this is changed be sure to set it back.

Use of AI1, AI2 and AI3 modes are not permitted.

P3 Macros:

You can use P3 macros using the normal P3 commands such as #SPN000500; which sets the span of the P3 to 50kHz

KPA500 Macros:

You can use KPA500 macros using the normal KPA commands such as ^FC4; which sets the minimum fan speed to 4. Please note that bootloader commands are not supported and if the KPA500 is off the commands are ignored.

KAT500 Macros:

To use the KAT500 macros, you must proceed each command with a &. For example, &AN1; sets the antenna to antenna 1. Please note that bootloader commands are not supported and if the KAT500 is off the commands are ignored.

Radio Menu Items (K3 and KX3)

From the "Tools" menu, select "Radio Menu Items". This will open the following screen:

K3 Menu Settings

Serial # 05453 MCU: 4.83 DSP: 2.82
FP Temp: 34 PA Temp: 31

Setting	GET	Value	SET
AF GAIN	GET	HI	SET
AFSK TX	GET	FI OFF	SET
AF LIM	GET	30	SET
AGC DCY	GET	NOR	SET
AGC HLD	GET	0.00	SET
AGC PLS	GET	NOR	SET
AGC SLP	GET	15	SET
AGC THR	GET	5	SET
AGC-F	GET	120	SET
AGC-S	GET	20	SET
AFX MD	GET	DELAY 5	SET
CW IAMB	GET	A	SET
CW PADL	GET	TIP+DOT	SET
CW QRQ	GET	OFF	SET
CW WGHT	GET	1.15	SET
DIGOUT1	GET	OFF	SET
DUAL PB	GET	NOR	SET
EXT ALC	GET	OFF 4.0	SET
FM DEV	GET	5.0	SET
FM MODE	GET	ON	SET
FSK POL	GET	1	SET
KIO3	GET	NOR	SET
LIN OUT	GET	0	SET
L-MIX-R	GET	A B	SET
MIC+LIN	GET	OFF	SET
MIC SEL	GET	FP	SET
MSG RPT	GET	6	SET
NB SAVE	GET	NO	SET
PTT KEY	GET	OFF-OFF	SET
PTT RLS	GET	20	SET
PWR SET	GET	NOR	SET
RFI DET	GET	NOR	SET
RIT CLR	GET	UNDO OFF	SET
SPKRS	GET	1	SET
SPKR+PH	GET	NO	SET
SPLT SV	GET	NO	SET
SW TONE	GET	OFF	SET
TX DLY	GET	8	SET
TX ESSB	GET	OFF 3.0	SET
TX GATE	GET	OFF 0	SET
TX INH	GET	OFF	SET
TX MON	GET	NOR	SET
TUN PWR	GET	0.0	SET
VOX GN	GET	0	SET
ANTVOX	GET	0	SET

OK GET ALL ☒ Save operating settings? Save File Load File Help

When this window is opened, all values shown are the default values as described in the Elecraft K3 and KX3 manuals. During the development it became apparent that displaying the current state of all menu items would take too much time when you open the window (30 seconds + on the KX3) so I have provided a way to quickly get the status of any given menu item by pressing one of the GET buttons. You may also change a value and then press the SET button.

It is however, possible to get all of the settings by pressing **GET ALL**. This will take upwards of 20 seconds on the K3 and 30+ seconds on the KX3. Polling of the radio is suspended during this process but polling by the AUX/CAT ports is not. It is advisable to close any third party products as well as any other Win4K3 windows before doing a **GET ALL** or **SET ALL**.

Saving the Settings to a File

Clicking on the "Save File" button will first do a "GET ALL" as shown by the GET ALL button being illuminated. You will then be prompted for a file name. You also have the choice to save the operating settings as well by checking or unchecking the "Save operating settings" checkbox.

One thing you must be aware of here: If you wish to save certain settings that only apply to a specific mode, such as CW, then the radio should be in CW mode to allow access to the radio menu items. For example, if you want to save the status of the DUAL PB, if you are not in CW mode then the value will not be correct.

Loading the Settings

Clicking on the "Load File" button will retrieve a previously saved file and then set all of the radio operating parameters if they were included in the save, and then set all menu items to correspond to the ones saved. This can take up to 45 seconds or so.

Errors

Much attention was given to minimizing any errors that can occur from reading the menu items. The software will retry up to three times. If a valid response did not occur during these attempts an error message will be displayed and then the corresponding menu item's GET or SET button will remain illuminated.

This is particularly important when doing a GET ALL or SET ALL. During these activities, polling of the radio is temporarily suspended until the commands complete. This prevents the majority of any errors you will encounter. However, if you are using devices connected to the AUX / CAT ports, it is best to close them temporarily while you do the GET ALL and SET ALL commands.