

WARNING:
BEFORE USING THIS FIREARM,
READ THROUGH THESE WARNINGS
AND INSTRUCTIONS CAREFULLY
AND THOROUGHLY.

THIS MANUAL SHOULD ALWAYS ACCOMPANY
THIS PISTOL AND BE TRANSFERRED WITH IT
UPON CHANGES OF OWNER OR USER.

SAFETY and **INSTRUCTION** **MANUAL**

For Single-Action & LDA PXT
Pistols with 3- and 3.5-inch Barrels

Para
USA™

©2004-08 Para-Ordinance Mfg., Inc.

**THIS MANUAL ONLY APPLIES TO PARA-ORDNANCE
SINGLE-ACTION & LDA PXT PISTOLS
WITH 3- AND 3.5-INCH BARRELS.**

**FIREARMS ARE CLASSIFIED AS DANGEROUS
WEAPONS. THEREFORE THIS PRODUCT IS
POTENTIALLY LETHAL.**

**FAILURE TO READ, UNDERSTAND AND FOLLOW ANY OF
THESE WARNINGS AND INSTRUCTIONS MAY RESULT IN
INJURY, DEATH OR DAMAGE OF PROPERTY.**



WARNING

CHILDREN ARE ATTRACTED TO AND CAN OPERATE FIREARMS THAT CAN CAUSE SEVERE INJURIES OR DEATH. PREVENT CHILD ACCESS BY ALWAYS KEEPING GUNS LOCKED AWAY AND UNLOADED WHEN NOT IN USE. IF YOU KEEP A LOADED FIREARM WHERE A CHILD OBTAINS AND IMPROPERLY USES IT, YOU MAY BE FINED OR SENT TO PRISON.



ADVERTENCIA

A LOS NIÑOS LOS ATRAEN LAS ARMAS DE FUEGO Y LAS PUEDEN HACER FUNCIONAR ELLOS PUEDEN CAUSARSE LESIONES GRAVES Y LA MUERTE. EVITE QUE LOS NIÑOS TENGAN ACCESO A LAS ARMAS DE FUEGO GUARDANDOLAS SIEMPRE CON LLAVE Y DESCARGADAS CUANDO NO LAS ESTE UTILIZANDO, SI USTED TIENE UNA ARMA DE FUEGO CARGADA EN UN LUGAR EN QUE UN NIÑO TIENE ACCESO A ELLA Y LA USA INDEBIDAMENTE, LE PUEDEN DAR UNA MULTA O ENVIARLO A LA CARCEL.

WARNING: DO NOT MAKE ANY ATTEMPTS TO PRACTICE LOADING, UNLOADING, ETC. WITH LIVE AMMUNITION UNLESS YOU HAVE FULLY UNDERSTOOD THIS MANUAL AND ARE CERTAIN ABOUT THE PROPER HANDLING AND OPERATION OF THIS PRODUCT.

WHERE IN DOUBT ABOUT YOUR ABILITY TO HANDLE OR USE THIS HANDGUN SAFELY, SEEK SUPERVISED INSTRUCTION RUN BY A LOCAL GUN CLUB, GUN DEALER, OR POLICE DEPARTMENT.

FIREARMS SAFETY – ACCIDENT PREVENTION YOUR RESPONSIBILITY

**WHEN PRESSING THE TRIGGER, YOU MUST
EXPECT THE GUN TO FIRE AND YOU MUST
TAKE FULL RESPONSIBILITY FOR FIRING IT**

**ALWAYS TREAT A FIREARM
AS IF IT WERE LOADED**

**THE BASIC PRINCIPLES OF HANDLING AND
OPERATION OF THIS FIREARM MUST BE FULLY
UNDERSTOOD AND FOLLOWED EXACTLY.
THIS MANUAL IS PROVIDED TO ASSIST YOU
IN THE PROPER USE AND MAINTENANCE OF
YOUR PARA-ORDNANCE PISTOL. IF YOU HAVE
ANY FURTHER QUESTIONS, PLEASE CONTACT
US DIRECTLY.**

MANUALS ARE AVAILABLE
FREE FROM THE FACTORY:



980 TAPSCOTT ROAD
SCARBOROUGH, ONTARIO M1X 1C3, CANADA

(416) 297-7855 • FAX: (416) 297-1289

www.paraord.com

CONTENTS

	Page
MAIN FEATURES	1
FIREARM SAFETY INSTRUCTIONS	5
FEATURES	
TECHNICAL DATA & AMMO INFO	10
SAFETY FEATURES	
SLIDE LOCK SAFETY	11
GRIP SAFETY	13
PASSIVE SAFETIES	14
FUNCTION	
PROPER LUBRICATION AND BREAK-IN PERIOD	16
LOADING	20
UNLOADING	24
FIRING	25
MALFUNCTIONS	26
MAINTENANCE	
DISASSEMBLY	28
REASSEMBLY	31
POWER EXTRACTOR	36
CLEANING PISTOL	37
CLEANING SINGLE STACK MAGAZINE	38
CLEANING HIGH CAPACITY MAGAZINE	38
DISASSEMBLY, CLEANING AND REASSEMBLY OF 10-ROUND PARA-ORDNANCE MAGAZINE	40
TRANSPORTATION & STORAGE	43
WARRANTY INFORMATION	44
SERVICE & REPAIR	45
LIMITS & LIABILITY	46
SPARE PARTS	47
SINGLE-ACTION PARTS ILLUSTRATION	48
LDA PARTS ILLUSTRATION	52

MAIN FEATURES - Single-Action, High Capacity



MAIN FEATURES - Single Stack, Single-Action



MAIN FEATURES - LDA, High Capacity, Carry Option



MAIN FEATURES - LDA, Single Stack, Carry Option



FIREARMS SAFETY INSTRUCTIONS

DO NOT USE ANY FIREARM WITHOUT HAVING A FULL AND COMPLETE UNDERSTANDING OF ITS PARTICULAR MECHANICAL AND HANDLING CHARACTERISTICS.

FOR YOUR SAFETY AND THE SAFETY OF OTHERS YOU MUST ENSURE YOUR COMPLETE AND CLEAR UNDERSTANDING OF THIS MANUAL AND YOU MUST FOLLOW ITS SAFETY INSTRUCTIONS EXACTLY.

NEVER ALLOW ANYONE TO USE THIS FIREARM WITHOUT HAVING THAT PERSON READ THIS MANUAL FIRST.

IMPROPER HANDLING OF YOUR PISTOL CAN RESULT IN INJURY, DEATH OR PROPERTY DAMAGE.

CAUTIONS:

1. ALWAYS TREAT EVERY FIREARM AS IF IT WERE LOADED.
2. NEVER – EVER – POINT ANY GUN, LOADED OR UNLOADED, AT ANYTHING YOU DO NOT INTEND TO SHOOT.
3. ALWAYS KEEP YOUR FINGER AWAY FROM THE TRIGGER, OUTSIDE THE TRIGGER GUARD, UNTIL YOU ARE AIMING AT A TARGET AND READY TO SHOOT.

4. ALWAYS BE SURE OF YOUR BACKSTOP, WHAT LIES BEYOND YOUR TARGET, AND THE SAFETY OF BYSTANDERS BEFORE YOU CONSIDER SHOOTING YOUR PISTOL. THE BACKSTOP MUST BE ADEQUATE TO STOP AND CONTAIN BULLETS. OTHERWISE, A BULLET IS CAPABLE OF TRAVELING THROUGH OR PAST YOUR TARGET FOR A DISTANCE OF UP TO 1 1/2 MILES. DO NOT SHOOT IF YOU ARE UNCERTAIN ABOUT WHAT LIES BEYOND YOUR TARGET.
5. ALWAYS MAKE SURE YOUR PISTOL IS UNLOADED AND THE SLIDE IS LATCHED OPEN BEFORE HANDING IT TO ANOTHER PERSON OR LAYING IT DOWN.
6. ALWAYS MAKE SURE THAT YOUR PISTOL HAS NOT BEEN IN ANY WAY DAMAGED AS THE RESULT OF IT HAVING BEEN DROPPED OR ANY OTHER INCIDENT OR CIRCUMSTANCE, INCLUDING CORROSION, THAT MAY HAVE POSSIBLY CAUSED DAMAGE TO SOME PARTS OF THE MECHANISM.
7. ALWAYS HAVE A COMPETENT GUNSMITH INSPECT YOUR PISTOL SO AS TO ENSURE ITS PROPER FUNCTION. REMEMBER, ONLY WEAPONS IN PERFECT WORKING ORDER CAN BE SAFE WEAPONS.
8. NEVER LEAVE A PISTOL COCKED AND READY TO FIRE.

ALWAYS USE YOUR HANDGUN SAFELY AND WISELY. PROTECT YOURSELF AND THOSE AROUND YOU BY TAKING THE PROPER AND NECESSARY PRECAUTIONS PRIOR TO FIRING YOUR PISTOL. REMEMBER, UNSAFE PRACTICES CAN BE THE CAUSE OF INJURY, DEATH, OR PROPERTY DAMAGE.

9. NEVER LEAVE A LOADED PISTOL UNATTENDED.
10. ALWAYS MAKE SURE THAT ANY OTHER SHOOTERS OR BYSTANDERS ARE WELL CLEAR OF YOU WHEN PREPARING TO SHOOT YOUR PISTOL. EJECTED CARTRIDGES CAN CAUSE INJURY TO ANYONE STANDING IN THEIR PATH. NEVER OBSTRUCT THE EJECTION PORT ON YOUR PISTOL BY PLACING YOUR FINGERS IN FRONT OF IT.
11. ALWAYS WEAR ADEQUATE SHOOTING GLASSES AND ENCOURAGE OTHERS TO DO THE SAME. UNPROTECTED EYES MAY BE INJURED BY POWDER GAS, CARBON RESIDUE, LUBRICANT, METALLIC PARTICLES OR SIMILAR DEBRIS THAT CAN DAMAGE EYES AND EVEN CAUSE BLINDNESS.
12. ALWAYS WEAR ADEQUATE EAR PROTECTION AND MAKE SURE THAT OTHERS IN YOUR VICINITY DO THE SAME. REPEATED EXPOSURE TO SHOOTING NOISE CAN LEAD TO CUMULATIVE, PERMANENT HEARING LOSS.
13. ALWAYS CARRY YOUR PISTOL EMPTY WITH THE SLIDE LATCHED OPEN UNTIL PREPARING TO FIRE.

ALWAYS EMPLOY SAFE HANDLING, LOADING, AND SHOOTING METHODS. REMEMBER A LOADED FIREARM HAS THE POTENTIAL TO KILL. INTELLIGENTLY HANDLED IT CAN BE USED SAFELY.

14. NEVER CONSUME ALCOHOL OR TAKE DRUGS PRIOR TO SHOOTING. IF UNDER MEDICATION, SEEK A DOCTOR'S ADVICE TO BE SURE THAT YOU ARE FIT AND ABLE TO HANDLE A GUN SAFELY.

15. NEVER SHOOT AT A FLAT SURFACE OF WATER OR AT ANY HARD SURFACE IN ORDER TO AVOID HAZARDOUS RICOCHETS THAT CAN CAUSE INJURY, DEATH, OR PROPERTY DAMAGE.

ALWAYS USE AMMUNITION THAT COMPLIES WITH THE INDUSTRY PERFORMANCE STANDARD AS ESTABLISHED BY THE SPORTING ARMS AND AMMUNITION MANUFACTURER'S INSTITUTE (SAAMI). TO DO OTHERWISE MAY RESULT IN INJURY, DEATH, OR DAMAGE TO PROPERTY.

16. ALWAYS MAKE SURE THE MUZZLE IS POINTED IN A SAFE DIRECTION.
17. NEVER LOAD YOUR PISTOL UNTIL YOU ARE PROPERLY READY TO USE IT. UNLOAD IT THE MINUTE YOU HAVE COMPLETED SHOOTING.
18. ALWAYS EXAMINE THE BARREL BORE TO BE CERTAIN IT IS CLEAR AND FREE OF ANY OBSTRUCTIONS. ANY OBSTRUCTION, WHETHER IT BE FROM DIRT, CORROSION OR OTHER DEBRIS, EVEN A HEAVY COATING OF OIL OR DROPS OF WATER, MAY RESULT IN DAMAGE TO THE PISTOL THAT CAN CAUSE INJURY, DEATH, OR PROPERTY DAMAGE.
19. ALWAYS USE ONLY CLEAN, DRY, ORIGINAL HIGH QUALITY FACTORY-MADE AMMUNITION THAT IS IN GOOD CONDITION AND OF THE PROPER TYPE AND CALIBER FOR YOUR GUN. IMPROPERLY LOADED AMMUNITION CAN PROVE TO BE EXTREMELY DANGEROUS WHEN CARTRIDGES HAVE BEEN LOADED OUTSIDE THE EXACTING SAFETY LIMITS BUILT INTO YOUR PISTOL.

20. USE OF EXTRA HIGH-PRESSURE AMMUNITION MAY CAUSE RELIABILITY PROBLEMS. AS WITH ANY HANDGUN, PROLONGED USE OF EXTRA HIGH PRESSURE AMMUNITION MAY SHORTEN THE SERVICE LIFE OF THE PISTOL.
21. ALWAYS HAVE THE SAFETY ON UNTIL YOU INTEND TO FIRE.
22. NEVER WALK OR CLIMB WITH A LOADED FIREARM. PISTOLS HAVE SHORT BARRELS AND THEREFORE EXTREME CARE SHOULD BE TAKEN WHEN HANDLING THEM BECAUSE THEIR ATTITUDE AND DIRECTION CAN BE EASILY CHANGED. HOLD YOUR PISTOL SO THAT THE MUZZLE IS CONTROLLABLE.

ALWAYS STORE GUNS AND AMMUNITION SEPARATELY, LOCKED IF POSSIBLE, OUT OF SIGHT, AND BEYOND THE REACH OF CHILDREN AND INEXPERIENCED OR CARELESS ADULTS.

23. ALWAYS MAKE SURE THAT YOUR PISTOL IS NOT LOADED BEFORE CLEANING AND STORING IT.
23. NEVER DRY FIRE YOUR PISTOL WHEN YOU HAVE REMOVED THE SLIDE FROM THE RECEIVER.

LEAD WARNING:

DISCHARGING FIREARMS IN POORLY VENTILATED AREAS, CLEANING FIREARMS, OR HANDLING AMMUNITION MAY RESULT IN EXPOSURE TO LEAD AND OTHER SUBSTANCES KNOWN TO CAUSE BIRTH DEFECTS, REPRODUCTIVE HARM, AND OTHER SERIOUS INJURY. HAVE ADEQUATE VENTILATION AT ALL TIMES. WASH HANDS THOROUGHLY AFTER EXPOSURE.

FEATURES

With law enforcement officers and competitive shooters in mind, Para-Ordnance's pistols offer unique features along with the durability and reliability of a time-proven design. Para's semi-automatic pistols are quite similar in appearance and they all function in the same manner. Among themselves, the pistols vary in caliber, size, weight, trigger system, barrel/barrel bushing configuration, surface finish, and in the type of metal used for their respective receivers (steel, stainless steel or alloy).

Table 1: TECHNICAL DATA AND AMMUNITION INFORMATION

Model	Product Code	Caliber	Rounds	Barrel	Receiver
Slim Hawg	PSHX645S	.45 ACP	6+1	3"	Stainless
Slim Hawg	PSHX645R	.45 ACP	6+1	3"	Alloy
Nite Hawg	NHX1045N	.45 ACP	10+1	3"	Alloy
Warthog	WHX1045R	.45 ACP	10+1	3"	Alloy
Warthog	WHX1045S	.45 ACP	10+1	3"	Stainless
Hawg 9	WHX129R	9MM	12*+1	3"	Alloy
Lite Hawg .45	RHX1045E	.45 ACP	10+1	3"	Steel
Lite Hawg 9	RHX129E	9MM	12*+1	3"	Steel
1911 OPS	PCWX745S	.45 ACP	7+1	3.5"	Stainless
Carry	CWX645B	.45 ACP	6+1	3"	Stainless
Carry	CWX645S	.45 ACP	6+1	3"	Stainless
PDA	CWX645R	.45 ACP	6+1	3"	Alloy
Carry Gap	CWX645G	.45 GAP	6+1	3"	Steel
PDA	CSX89R	9MM	8+1	3"	Alloy
Carry 9	CWX79R	9MM	8+1	3"	Alloy
CCO	CWX745S	.45 ACP	7+1	3.5"	Stainless
CCO Gap	CWX745G	.45 GAP	7+1	3.5"	Steel
Carry 12	CTX1245N	.45 ACP	12*+1	3.5"	Stainless
Companion	CX745S	.45 ACP	7+1	3.5"	Stainless

* Where legal. A 10-round option is also available where firearms owners' capacity is restricted.

SAFETY FEATURES

Para-Ordnance semi-automatic pistols are equipped with a number of safety devices (some are hand-operated while others are passive) that are designed to minimize accidental discharges.

There is some difference between how the Single-Action and Light Double-Action safeties work. Be sure you are reading the correct instructions.

NEVER RELY ON A SAFETY MECHANISM TO JUSTIFY CARELESS HANDLING OR POOR MAINTENANCE. ALWAYS POINT YOUR PISTOL IN A SAFE DIRECTION.

HAND-OPERATED SAFETIES

These safeties are activated manually.

SLIDE LOCK SAFETY: Single-Action

This safety device can only be activated when the hammer is fully cocked with slide fully forward (**Figure 1**).

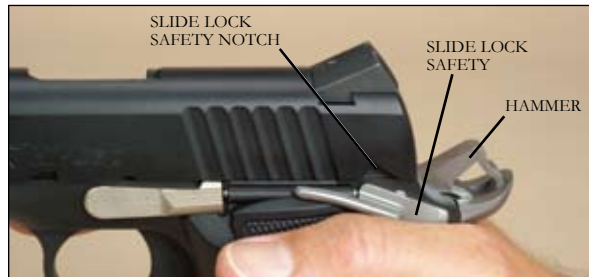


Figure 1

NEVER LEAVE YOUR PISTOL COCKED AND READY TO FIRE. THIS IS AN EXTREMELY DANGEROUS CONDITION WHICH CAN LEAD TO AN ACCIDENTAL DISCHARGE THAT MAY CAUSE INJURY, DEATH, OR PROPERTY DAMAGE.

To engage the Slide Lock Safety you must, while pointing the pistol in a safe direction with your finger away from the trigger, pull the slide to its most rearward position and then let it return all the way forward, freely and with all its force. This will leave the hammer fully cocked. Then push the Slide Lock Safety up until it fully engages the Slide Lock Notch (**Figure 2**). At this point, the slide is prevented from moving rearward and an internal cam surface engages the sear to prevent the hammer from moving forward if the trigger is pressed.



Figure 2

SLIDE LOCK SAFETY: Double-Action

This safety device can only be activated when the slide is fully forward.

To engage the Slide Lock Safety, push the Slide Lock Safety up until it fully engages the Slide Lock Notch. At this point, the slide is prevented from moving rearward. If the cocking cam has been cocked and the trigger re-set, engaging the slide lock safety will disengage the drawbar to prevent the hammer from moving rearward if the trigger is pressed.

GRIP SAFETY: Single-Action

The Grip Safety (**Figure 3**) prevents the rearward travel of the trigger, which is necessary to fire the pistol, unless the pistol is firmly in hand with a positive grasp of the Grip Safety. When ready to fire the pistol with a firm hold on the receiver, the forward pressure that is applied to the Grip Safety disengages this safety device and allows the trigger the necessary freedom for rearward movement required to fire the pistol.



Figure 3

NEVER COMPROMISE SAFETY. NEVER ALTER OR MODIFY THIS PISTOL IN ANY WAY. THE MANUFACTURER WILL NOT BE RESPONSIBLE FOR ANY UNAUTHORIZED MODIFICATIONS PERFORMED ON THIS GUN.

GRIP SAFETY: Double-Action

The Grip Safety locks both the hammer and slide. In order to press the trigger and move the hammer, which is necessary to fire the pistol, you must firmly grasp the pistol's receiver, fully depressing the Grip Safety. When you are ready to fire the pistol, the forward pressure of your hand on the Grip Safety disengages this safety device and allows the hammer the necessary freedom for its rearward movement required to fire the pistol when the trigger is pressed.

PASSIVE SAFETIES

THESE SAFETIES ARE ACTIVATED AUTOMATICALLY WITHOUT MANUAL INTERVENTION. DO NOT BYPASS THEM OR RENDER THEM INOPERATIVE.

These mechanisms form parts of a safety system incorporated into your Para-Ordnance pistol and they are designed and installed for the prevention of accidental discharges that could otherwise follow as the result of some commonplace occurrences.

NEVER RELY ON A SAFETY MECHANISM TO JUSTIFY CARELESS HANDLING OF YOUR PISTOL.

Both Single- and Double-Action Para pistols are equipped with the following passive safeties:

Inertia Firing Pin: Size and position of the firing pin, which is held to the rear by a spring, keep the pin from striking the cartridge primer unless the spring force and inertia of the

firing pin are overcome by the blow of the hammer.

Firing Pin Lock: To minimize the risk of accidental discharge that may be the result of the pistol being dropped or the muzzle receiving a blow, this safety device prevents the movement of the firing pin until the trigger is intentionally pressed.

ALWAYS EXPECT THE GUN TO FIRE WHEN YOU PRESS THE TRIGGER.

The additional passive safeties are only on Single-Action pistols:

Disconnecter: Protects against firing a round prior to its being properly seated in the chamber of the barrel and the slide and barrel not having locked together.

Hammer Safety Stop: The hammer is designed with a flat, shelf-like surface which is there to prevent the hammer from falling forward and onto the firing pin unintentionally by engaging the sear should there occur a primary sear notch failure.

FUNCTION

The action on a Para pistol is based on a tilting barrel design that locks the barrel and slide together at the moment of firing. After firing, the barrel and slide recoil to the rear for a short distance still locked together. Following this initial movement, the barrel tilts downward from its locked position, permitting full recoil of the slide and the extraction and ejection of the spent cartridge cases.

ALWAYS REMEMBER THAT WHEN FIRED, A SEMI-AUTOMATIC PISTOL RELOADS AND RECOCKS ITSELF AUTOMATICALLY AND IS READY TO FIRE AGAIN BY SIMPLY PRESSING THE TRIGGER. ALWAYS KEEP THE PISTOL POINTED IN A SAFE DIRECTION.

PROPER LUBRICATION

REMOVE THE MAGAZINE AND MAKE SURE THERE IS NOT A CARTRIDGE IN THE CHAMBER OF THE BARREL BEFORE LUBRICATING YOUR PISTOL.

Before using your new pistol for the first time, we recommend that you check to make sure it is properly lubricated.

As always when picking up a handgun for the first time **MAKE SURE THE MUZZLE IS POINTED IN A SAFE DIRECTION** retract the slide and lock the action of the pistol open.

REMOVE THE MAGAZINE AND MAKE SURE THERE IS NOT A CARTRIDGE IN THE CHAMBER OF THE BARREL.

Once you have made sure the pistol is unloaded, inspect the outside of the barrel to make sure that it has a light film of oil on it. With the slide locked back turn the pistol over and inspect the grooves on the inside of the slide to make sure they are lubricated (**Figure 4**).



Figure 4



Figure 5

If the pistol appears to be dry add a drop of gun oil to each of the grooves in the slide and a drop of gun oil behind the muzzle of the barrel (**Figure 5**).

DO NOT let oil get inside the muzzle, if it does use a bore swab to remove excess oil from the inside of the barrel. Close the slide and place a drop of gun oil on top of the barrel hood (**Figure 6**).



Figure 6

WITH THE MUZZLE POINTED IN A SAFE DIRECTION AND THE MAGAZINE REMOVED FROM THE PISTOL, run the slide back and forth several times to work the lubricant between the barrel and the slide and between the slide and the frame.

There is no need to over lubricate your pistol, four drops is all you need. If you have any questions on how to lubricate your pistol consult your Para Dealer or Para Customer Service.

BREAK-IN PERIOD FOR A LIFETIME OF SERVICE

All Para pistols are hand assembled to exacting tolerances and, like any precision instrument, we recommend that you adhere to the following break-in period before placing your new Para pistol into service.

BE SURE TO ALWAYS USE ALL PROPER SAFETY PRECAUTIONS WHEN LOADING AND FIRING YOUR PISTOL.

Take your pistol to the range and carefully follow the SAFETY INSTRUCTIONS which follow on how to load and fire your pistol. Using the correct ammunition for your model pistol (see Table 1) and following the previous CAUTIONS shoot 50 rounds of ammunition through the pistol alternating with each of the two magazines provided with your pistol. Should you encounter any difficulties try a different brand or type of high quality factory made ammunition.

Remember that you must have a proper grip on the pistol to ensure its reliable function. This is especially true of short-barreled, large caliber, autoloading pistols. If you suspect that you are having malfunctions due to an unlocked wrist while shooting

your pistol consult your Para Dealer or a certified handgun instructor on the proper technique of gripping your pistol.

Repeat the 50-round break-in cycle. At 100 rounds, field strip your pistol according to the Disassembly instructions starting on page 28. Inspect the pistol for proper lubrication, clean the pistol and re-lubricate it following the Reassembly instructions on page 31. Repeat this cycle until you have reached 300 rounds. If you have any malfunctions consult your Para Dealer or Para Customer Service. When you do, please, provide them with information on the nature of the malfunction and the brand and type of ammunition you were using.

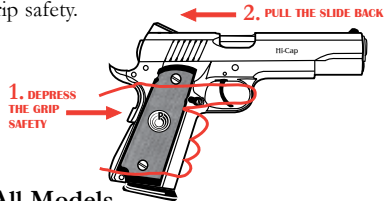
At Para, we believe that providing you with the best pistol means we stand behind that pistol 100% for as long as you own it. We will provide you as the original retail purchaser all the necessary service, free of charge, for the lifetime of the pistol, where adjustment or repair is required due to some defect in materials or workmanship.

NOTES:

OPERATION

LDA PISTOLS

The proper method for manually cocking the LDA pistol is by pulling back the slide. To pull back the slide, you must first fully depress the grip safety.



LOADING: All Models

DO NOT LOAD DAMAGED AMMUNITION. ALWAYS LOAD YOUR MAGAZINE WITH CLEAN, DRY, ORIGINAL HIGH QUALITY FACTORY MADE AMMUNITION THAT IS IN GOOD CONDITION AND THE PROPER CALIBER FOR YOUR PISTOL (TABLE 1). PRACTICE WITH DUMMY CARTRIDGES.

PRACTICE THESE IMPORTANT ASPECTS OF SAFE GUN HANDLING WITH AN UNLOADED PISTOL OR WITH DUMMY ROUNDS UNTIL YOU ARE ABLE TO PERFORM EACH OF THE FOLLOWING STEPS WITH SKILL AND CONFIDENCE. READ THROUGH THIS MANUAL COMPLETELY BEFORE MAKING ACTUAL USE OF THIS PISTOL.

1. Remove the empty magazine from your pistol by pressing on the magazine catch button (**Figure 7**). **NOTE:** As the magazine will fall free from the receiver of its own weight, place one hand under the magazine to prevent it from dropping to the ground and having it damaged.



Figure 7

2. Load magazine from the top open end, with the proper type and quantity of ammunition for your pistol (**Table 1**). Press rounds down and back (**Figure 8**).

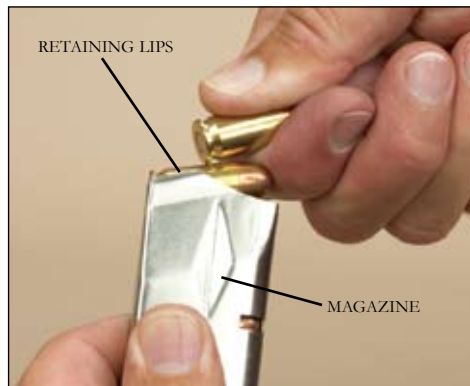


Figure 8

3. ENSURE THAT THE BARREL CHAMBER IS EMPTY AND THAT THE BORE IS FREE OF OBSTRUCTIONS. To do so, pull back on the slide, by grasping the serrated sides of the slide from the rear, and take a look into the chamber and bore. Having inspected the chamber and bore, and made sure the chamber is empty, allow the slide to return to its forward position. Where this step has caused the hammer to cock, press the trigger causing the hammer to fall with an empty chamber.
4. Insert the magazine into the frame of the pistol with cartridges pointing forward and make sure that the magazine is pressed up far enough to lock into place.
NOTE: DO NOT SLAM THE MAGAZINE INTO PLACE.
5. WITH THE MUZZLE ALWAYS POINTED IN A SAFE DIRECTION, hold the pistol firmly in the shooting hand without touching the trigger. With the other hand on the serrated finger grooves of the slide, pull the slide back, as far as it will go, to cock the hammer. Release the slide and allow it to fly forward with all its force and feed the top round from the magazine into the chamber. THE PISTOL IS NOW READY FOR INSTANT USE.
6. APPLY SLIDE LOCK SAFETY UNTIL YOU ARE READY TO SHOOT.

NEVER LEAVE YOUR PISTOL IN THE COCKED AND READY TO FIRE POSITION. THIS CONDITION IS EXTREMELY DANGEROUS.

LOADING - ALTERNATE SEQUENCE

PRACTICE THESE IMPORTANT ASPECTS OF SAFE GUN HANDLING WITH AN UNLOADED PISTOL OR WITH DUMMY

ROUNDS UNTIL YOU ARE ABLE TO PERFORM EACH OF THE FOLLOWING STEPS WITH SKILL AND CONFIDENCE. READ THROUGH THIS MANUAL COMPLETELY BEFORE MAKING ACTUAL USE OF THIS PISTOL.

1. Insert an **EMPTY** magazine (one with no cartridges in it) into the frame of the pistol. Pull back on the slide, by grasping the serrated sides of the slide from the rear, until the magazine follower pushes the slide stop up into the slide stop notch on the slide (**Figure 7**). The slide is now locked open in its rearward position and the hammer is cocked.
2. Remove the empty magazine from your pistol by pressing on the magazine catch button (**Figure 7**). **NOTE:** As the magazine will fall free from the receiver of its own weight, place one hand under the magazine to prevent it from dropping to the ground and having it damaged.
3. ENSURE THAT THE BARREL CHAMBER IS EMPTY AND THAT THE BORE IS FREE OF OBSTRUCTIONS. VISUALLY AND PHYSICALLY INSPECT THE BARREL CHAMBER TO ENSURE THAT IT IS EMPTY. Insert a loaded magazine into the frame of the pistol with cartridges pointing forward and make sure that the magazine is pressed up far enough to lock into place. **NOTE: DO NOT SLAM THE MAGAZINE INTO PLACE OR OVER INSERT IT.**
4. WITH THE MUZZLE ALWAYS POINTED IN A SAFE DIRECTION, hold the pistol firmly in the shooting hand WITHOUT TOUCHING THE TRIGGER. Pull back on the slide with the other hand, by grasping the serrated sides of the slide from the rear, as far as it will go. Release the slide and allow it to fly forward with all its force and feed the top round from the magazine into the chamber. The pistol is now ready for instant use.
5. APPLY SLIDE LOCK SAFETY UNTIL YOU ARE READY TO SHOOT.

NEVER LEAVE YOUR PISTOL IN THE COCKED AND READY TO FIRE POSITION. THIS CONDITION IS EXTREMELY DANGEROUS.

UNLOADING

Always unload your pistol immediately after use and before cleaning and storage. **BEFORE PROCEEDING MAKE SURE YOU ARE WEARING SAFETY GLASSES AND KEEP THE PISTOL POINTED AWAY FROM YOUR FACE.**

FOLLOW THIS UNLOADING SEQUENCE EXACTLY IN ORDER TO AVOID THE POSSIBILITY OF THE CHAMBER BEING UNINTENTIONALLY LOADED WITH A LIVE CARTRIDGE.

1. WITH THE MUZZLE ALWAYS POINTED IN A SAFE DIRECTION, hold the pistol firmly in the shooting hand WITHOUT TOUCHING THE TRIGGER. Remove the magazine by placing the other hand below it and pressing the magazine catch button.
2. When unloading prior to the magazine having been totally expended and the slide stop having latched the slide open, keep your hands clear of the ejection port and pull the slide back vigorously to extract and eject a round from the chamber. **NOTE:** If the slide is locked open in its rearward position, this step (Step #2) does not apply.
3. **CAUTION:** INSPECT THE CHAMBER AND MAKE SURE THAT IT IS EMPTY AND THAT THE MAGAZINE IS OUT OF THE PISTOL.
4. With pistol still pointing in a safe direction, release the slide and allow it to snap forward on the empty chamber and then press the trigger and let the hammer decock. **NOTE:** If the slide is locked open to its rearward position, pull the slide back slightly and then release it.

5. If the magazine contains any cartridges, hold it with the bullet end of the cartridges pointing away from you and press each cartridge forward and out of the magazine.
6. SEGREGATE MISFIRED AND DAMAGED AMMUNITION FOR DISPOSAL ACCORDING TO AMMUNITION MANUFACTURER'S INSTRUCTIONS.

FIRING

ALWAYS WEAR AND ENCOURAGE OTHERS AROUND YOU TO WEAR EAR PROTECTION AND SAFETY GLASSES WHICH SHOULD PREVENT POSSIBLE PERMANENT HEARING LOSS OR BLINDNESS.

1. WITH THE BARREL ALWAYS POINTING IN A SAFE DIRECTION, load your pistol as previously described in the section on "LOADING."
2. With a firm hold on the pistol receiver, KEEPING YOUR FINGER AWAY FROM THE TRIGGER, take aim and press down on the slide lock safety to disengage it from the slide lock notch.
3. Take steady aim at your target and place your index finger over the trigger. Press the trigger gently, pulling it to the back, until the hammer falls on the firing pin.

THIS IS A SEMI-AUTOMATIC PISTOL THAT WHEN FIRED, AUTOMATICALLY RELOADS AND RECOCKS ITSELF AND IS READY TO FIRE AGAIN SIMPLY BY PULLING THE TRIGGER.

4. Immediately following the firing of a shot, and if a subsequent shot is not to be fired at once, apply the slide lock safety by pushing it into the slide lock notch. However, if the last round has already been fired from the magazine the slide will be locked to the rear with the engagement of the slide stop and the slide lock safety cannot be applied.
5. WITH PISTOL POINTING IN A SAFE DIRECTION, unload as previously described in section on “UNLOADING.”

MALFUNCTIONS

In any semi-automatic pistol, stoppages can occur due to mechanical malfunction or ammunition failure. Please perform the following procedures to correctly deal with such malfunctions.

NEVER FORCE A JAMMED ACTION. TO DO SO MAY CAUSE AN EXPLOSION THAT CAN RESULT IN SERIOUS INJURY, DEATH OR PROPERTY DAMAGE.

1. STOP SHOOTING IMMEDIATELY if you encounter any other mechanical malfunction while firing your pistol, e.g., cartridge has failed to extract, report on firing does not sound right, powder gas is being “spit out,” cartridge primer is punctured or cartridge case is bulged or punctured. HAVE THE FIREARM AND AMMUNITION EXAMINED BY A COMPETENT GUNSMITH.
2. FAILURE TO FIRE: KEEP THE MUZZLE POINTED IN A SAFE DIRECTION and hold it there for 30 seconds to determine if a HANG FIRE (slow ignition) has occurred. If round has not fired within the 30 seconds, remove the magazine, eject the round and examine the primer.
3. In any semi-automatic pistol, an unfired cartridge or fired cartridge case may become jammed between the slide and the

barrel. To clear a jammed cartridge, KEEP THE MUZZLE POINTED IN A SAFE DIRECTION and remove the magazine. Pull the slide back and lock it to the rear by engaging the slide stop. Remove the cartridge.

NOTE: Disposal of misfired or otherwise damaged, unfired cartridges should be carried out according to instructions provided by the manufacturer of the ammunition.

MAINTENANCE

Proper periodic maintenance is essential to the reliable functioning of any firearm. The service life and performance of the pistol depend upon correct handling and proper care. All firearms require periodic maintenance and inspection which may reveal a need for adjustment or repair.

You should clean your pistol as soon after firing as possible and where your pistol has not been fired it should still be cleaned periodically. Have your firearm checked by a competent gunsmith annually, even if no functioning problem exists, since some potential problems may not be apparent from external examination of the pistol.

If the pistol gets wet, or is exposed to sand or other foreign matter, have it cleaned as soon as possible.

ALWAYS WEAR SAFETY GLASSES AND KEEP PISTOL POINTED AWAY FROM YOUR FACE WHEN PREPARING TO STRIP AND CLEAN YOUR PISTOL, TO AVOID INJURY TO THE EYES, IN THE EVENT THAT SOME COMPONENT MAY COME FLYING LOOSE FROM YOUR GUN.

DISASSEMBLY

Carefully follow the steps that apply to your specific model pistol for disassembly.

STEP 1. Always make certain that the MAGAZINE HAS BEEN REMOVED and your PISTOL IS NOT LOADED.

STEP 2. With the pistol unloaded and the muzzle pointing in a safe direction, depress the grip safety while pushing the slide back to the point that the slide stop lug is directly opposite the disassembly notch (**Figure 9**). Then push the rounded end of the slide stop pin, on the right side of the receiver, inward and through the receiver and out the left side.



Figure 9

BEFORE PROCEEDING MAKE SURE YOU ARE WEARING SAFETY GLASSES AND KEEP THE MUZZLE OF THE PISTOL POINTED AWAY FROM YOUR FACE.

CAUTION: the recoil spring is partially compressed during and after this step.

STEP 3. While holding the slide firmly, disengage the slide stop from the slide by removing it completely from the receiver (**Figure 10**). Carefully allow the slide to move forward. This allows the recoil spring to decompress.



Figure 10

STEP 4. Push the slide forward and remove the slide from the receiver. The recoil spring is partially compressed. Use care to prevent the recoil spring assembly from becoming disengaged from the slide (**Figure 11**).



Figure 11

STEP 5. Carefully lift the rear of the recoil spring assembly from the slide and allow it to fully decompress (**Figure 12**).

Lift the decompressed recoil spring assembly and pull it toward the rear and out of the slide.

STEP 6. To remove the recoil spring plug, push the plug from the front of the slide to the rear and remove it completely from the slide (**Figure 13**).



Figure 12

STEP 7. With the recoil spring plug already removed, push the barrel link forward and remove the barrel through the front of the slide.

If your pistol requires further work it should be done at an Authorized Service Center or at Para-Ordnance's Customer Service Center.



Figure 13

DO NOT DISASSEMBLE YOUR PISTOL ANY FURTHER. DO NOT REMOVE OR ALTER ANY PARTS, ESPECIALLY SAFETY PARTS.

REASSEMBLY

Carefully follow the steps that apply to your specific model pistol for reassembly.

STEP 1. Push barrel link forward and install the barrel through the front of the slide (**Figure 14**).



Figure 14

STEP 2.

To install the recoil spring plug, push the plug forward from the rear of the slide and insert the plug completely into the slide (**Figure 15**).



Figure 15

CAUTION: ANYTIME YOU ARE WORKING WITH SPRINGS AND COMPRESSING THEM YOU NEED TO WEAR SAFETY GLASSES TO AVOID INJURY TO THE EYES, IN THE EVENT THAT SOME COMPONENT MAY COME FLYING LOOSE.

STEP 3. Insert the recoil spring assembly into the rear of the recoil spring plug making sure the open end of the spring goes into the cap. **(Figure 16).**



Figure 16

Carefully compress the recoil spring assembly toward the front until the guide head can be lowered in place just in front of the barrel lugs. Make sure the barrel link is rotated back, then lower it in place **(Figure 17).**



Figure 17

STEP 4. While being careful not to allow the spring assembly to fly out, slowly turn the slide over (recoil spring assembly at the bottom). Simultaneously, wrap your hand around the front of the slide to keep the recoil spring assembly from popping out.

STEP 5. With your fingers wrapped around the slide to hold the recoil assembly in position **(Figure 18)**, slowly run the slide onto the receiver to the point that the hole in the barrel link is exposed through the slide stop hole in the receiver.

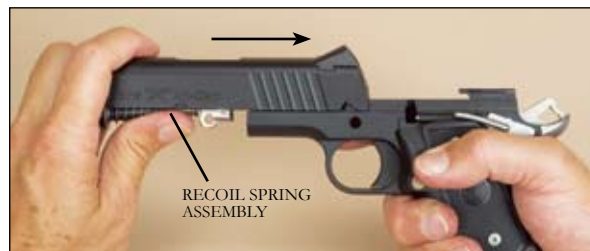


Figure 18

Make sure the plunger lever is down (forward) at the top of the receiver and keep it down by tipping the receiver forward (**Figure 19**). Shown here is the plunger lever on an LDA.



Figure 19

STEP 6. Make sure the grip safety is depressed on LDA Models, and push the slide rearward to properly align the disassembly notch and snap the slide stop into place (**Figure 20**).

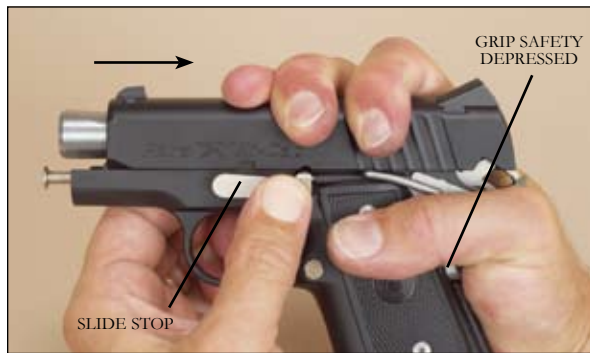


Figure 20

RECOIL SPRING ASSEMBLY - Maintenance Interval

The recoil spring assembly consists of the outer and inner recoil springs (Parts 37A and 37B), the recoil spring inner and outer guide rods, and the recoil spring guide plate (Parts 38A-C). The recoil spring assembly should be replaced every 800 to 1000 rounds when using standard velocity ammunition. The use of higher velocity ammunition will decrease the life of the springs and necessitate replacement earlier.

SIGHT ADJUSTMENT - Fixed Sights

The rear sight is adjustable for windage only. Using a 5/64" hex wrench which has been provided, loosen the hex set screw located directly in front of the rear sight notch. You may now change windage by moving the rear sight either left or right in its dovetail. Remember, always move your rear sight in the direction you want your bullet's impact to go (**Figure 21**).



Figure 21

POWER EXTRACTOR ASSEMBLY

The Power Extractor Assembly consists of four parts: body, coil spring, plunger and claw. The body (**Figure 22**) contains the coil spring and plunger, and the key at the rear of the claw hooks into the window at the front of the body.

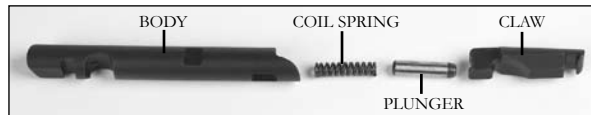


Figure 22

**ALWAYS WEAR SAFETY GLASSES
BEFORE DISASSEMBLING ANY PART THAT
CONTAINS A SPRING.**

Being careful not to launch the plunger, swing the key (**Figure 23**) at the rear of the claw out of the window in the body and away from the plunger. The plunger and the coil spring can now be removed from the body. To reassemble, insert the coil spring into the body followed by the plunger. Push the rear of the claw against the plunger and insert the key at the rear of the claw into the body window.



Figure 23

CLEANING PISTOL

1. Disassemble (field-strip) the pistol to the extent described on pages 28 through 30.
2. Clean your pistol by brushing the barrel bore and chamber with a good powder-removing solvent and bore brush. Wipe the areas clean with patches or a swab.
3. Using a small brush dipped in solvent, remove all deposits from around the breech of the barrel, chamber, extractor and adjacent areas which have been subjected to powder residue. Wipe all surfaces clean with patch or swab.
4. After cleaning the entire pistol, use a cloth to apply a light coating of high quality gun oil by passing it once through the barrel and all other surfaces.
5. Before using the pistol, pass a dry patch through the barrel to remove as much oil as possible. **NOTE:** Excess accumulations of oil can interfere with the safe and reliable function of the pistol.

**ALWAYS PASS A DRY PATCH THROUGH THE
BARREL TO REMOVE AS MUCH OIL AS POSSIBLE
PRIOR TO USING PISTOL. FIRING THE PISTOL
WITH OIL, GREASE OR ANY OTHER MATERIAL EVEN
PARTIALLY OBSTRUCTING THE BORE MAY RESULT IN
DAMAGE TO THE PISTOL WHICH CAN CAUSE INJURY,
DEATH, OR PROPERTY DAMAGE.**

BEFORE PROCEEDING MAKE SURE YOU ARE WEARING SAFETY GLASSES AND KEEP THE MAGAZINE POINTED AWAY FROM YOUR FACE.

CLEANING SINGLE STACK MAGAZINES



Figure 24

This should be done whenever cleaning the pistol. Remove the magazine follower and spring by depressing them with a pencil or wooden dowel about 2" into the magazine and inserting a thin rod through the lower of the front two holes in the magazine body. Turn the magazine upside down and tap it, so the follower falls away from the spring. Remove the follower from the magazine body. Now, push down on the spring to take up the tension, and remove the thin rod. You can now remove the spring from the magazine **(Figure 24)**.

Clean the follower, spring and magazine body. Lubricate lightly.

To reassemble, insert spring, with loop uppermost and pointed forward, back into magazine, compress spring and insert thin rod as previously directed. Place follower in magazine and remove the thin rod to allow the spring to press follower into its correct position.

CLEANING HIGH CAPACITY MAGAZINES

This should be done whenever cleaning the pistol. Slide magazine floor plate toward the front of the magazine, taking care to avoid forcible ejection of the magazine spring from the body. With the

floor plate out of the way, remove the spring and follower. Clean all components, taking care to remove any powder deposits on the magazine retaining lips and follower **(Figure 25)**.

NOTE: Place spring correctly oriented with closed loop uppermost pointing forward.

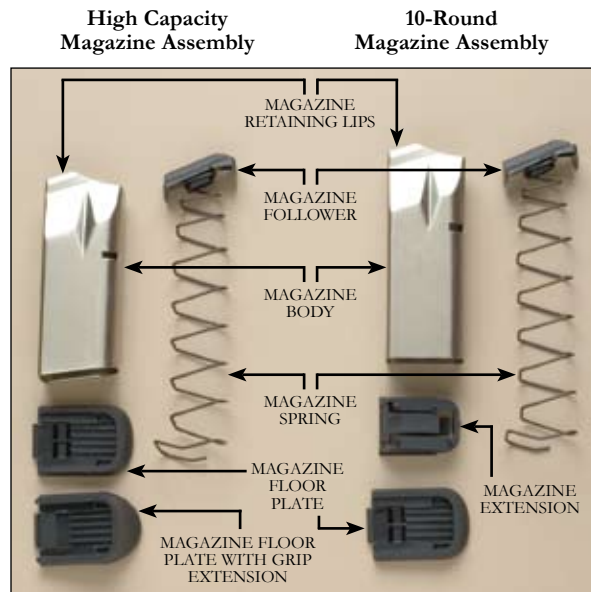


Figure 25

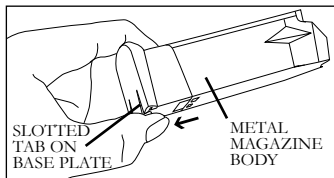
HIGH CAPACITY MAGAZINES (LEFT) MAY BE RESTRICTED IN SOME AREAS. PARA OFFERS 10-ROUND RESTRICTED CAPACITY MAGAZINES FOR ALL HIGH CAPACITY PISTOLS.

DISASSEMBLY, CLEANING & REASSEMBLY OF 10-ROUND PARA-ORDNANCE MAGAZINE

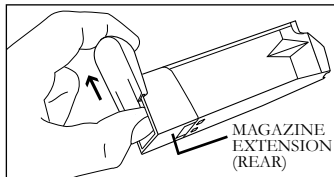
**BEFORE PROCEEDING MAKE SURE
YOU ARE WEARING SAFETY GLASSES
AND KEEP THE MAGAZINE
POINTED AWAY FROM YOUR FACE.**

DISASSEMBLY

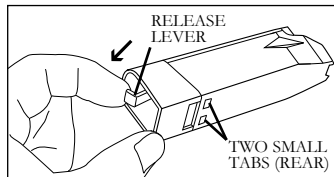
STEP 1: Remove all ammunition from the magazine. Firmly grasp the metal magazine body in one hand and with the other hand grip the magazine's base plate. Use your thumb to slightly raise the slotted tab at the rear of the base plate.



CAUTION: Lift the slotted tab only enough to clear the rear of the magazine extension.



STEP 2: Slide the base plate toward the front of the magazine to remove it.



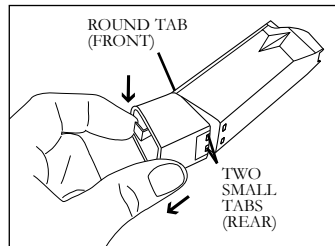
STEP 3: While holding the magazine in one hand, use the index finger of the other hand to gently apply a small amount of pressure to the release lever at the bottom of the magazine extension.

This will retract the two small tabs at the rear of the extension which keep it in place. Gently increase the pressure on the release lever until some resistance is felt.

CAUTION: Do not apply excessive pressure to the release lever or it may break off.

CAUTION: The spring and follower are compressed in the magazine. Care should be taken during this step to prevent them from flying out.

STEP 4: While maintaining the gentle pressure on the release lever, begin to rotate the magazine extension downward to release it from the metal magazine body. Release pressure from the lever as soon as the two small tabs at the top rear of the extension clear the magazine body. The extension can now be removed by easing it slightly rearward to release the round tab at the front. The spring and magazine follower can now be removed through the opening at the bottom of the metal magazine body. As you remove it, note which end faces the front.



CLEANING

CAUTION: Do not attempt to remove the follower from the spring.

Wipe the outside of the magazine with a rag. Insert a dry rag through the opening at the bottom of the metal magazine body and remove all residue from the inside. Do the same from the smaller opening at the top.

Clean all residue from the spring and from the magazine follower.

CAUTION: Do not apply oil to any part or lubricate any part of the magazine.

REASSEMBLY

STEP 1: Insert the spring and follower into the opening at the bottom of the metal magazine body

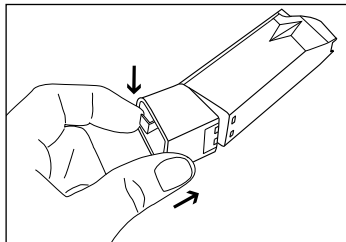
CAUTION: Make sure that the rounded top edge of the follower is at the front of the magazine.

Position the bottom of the spring around the four posts on the magazine extension. Then, gently compress the spring with the magazine extension so that it is fully contained inside the magazine body. Engage the round tab at the top front of the magazine extension in the small hole at the front of the magazine body.

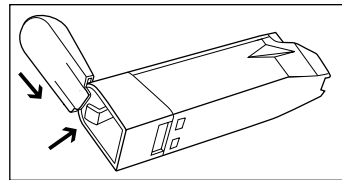
While still holding the spring compressed, gently apply a tiny amount of rearward pressure to the lever at the bottom of the extension until some resistance is felt.

Then, rotate the rear of the extension upwards so it engages the magazine body. Continue rotating until the two small tabs are fully engaged.

Release the pressure from the lever at the bottom of the extension. The magazine extension is now locked in place.



STEP 2: With your index finger, gently depress the lever at the bottom of the extension. This will allow you to replace the base plate without breaking the tab.



While holding the lever in a depressed position, begin to replace the base plate by sliding it rearward from the front of the extension. Be sure that the base plate engages the two rails on the sides of the extension.

Continue to slide the base plate towards the rear until a click is heard, indicating that the slotted tab at the rear of the base plate has passed over the rear edge of the extension, locking it in place.

Reassembly is now complete.

These instructions apply to all 10-round magazines for Para-Ordinance PXT handguns except for the micro-compact Warthog pistols. In order to clean and disassemble Warthog magazines, follow the instructions on page 38 for the Hi-Cap magazine.

TRANSPORTATION AND STORAGE

When transporting your firearm to and from shooting activities, keep it unloaded and obey all laws relating to the transportation of firearms in your area.

When storing your firearm, store it securely and keep it separated from ammunition, under lock and key, and out of the sight and reach of children and other inexperienced persons.

NOTE: Protect your firearms from theft.

DO NOT STORE your pistol in anything which will attract moisture, e.g., leather or heavy cloth, and do not store it in an air-tight container or with a plug inserted in the barrel for these are factors that can contribute to corrosion.

EXTENDED STORAGE requires that the internal mechanisms are well oiled with an acid-free lubricating oil or preservative while external mechanisms (receiver, barrel, etc.) should be coated with an anti-rust oil.

COLD CLIMATE STORAGE requires that you make use of an oil which will not congeal at low temperatures. USE SPARINGLY.

BEFORE USING YOUR FIREARM AGAIN, BE SURE TO CLEAN IT.

WARRANTY INFORMATION

Para-Ordnance acknowledges its obligations under implied warranty legislation, with respect to the sale of consumer goods, that may be in force in jurisdictions where its products are sold. Due to differences in the extent and interpretation of such statutes, and also on the basis of the Magnuson-Moss Warranty Act of the United States of America, Para-Ordnance has elected not to offer any written or express warranty on its product line and you are advised to consult existing legislation in your country, state or province with regard to any implied warranty rights you may have under such laws. However, Para-Ordnance is strongly committed to properly servicing its products, as it has over the years, and in place of an express or written warranty it will provide all necessary service for its pistols purchased after January 1, 2001 free of charge to the original purchaser only, where adjustment or repair is required due to some defect in materials or workmanship.

NOTE: Different remedies may be available to you in different jurisdictions.

SERVICE AND REPAIR

If any problem or question should arise with regard to the performance of your firearm, please contact us, by mail or telephone, and fully describe all circumstances involved. This will allow us to determine the best way to handle your problem. If authorized factory service is deemed necessary, you will be given a return authorization number and shipping instructions.

MAKE SURE THAT THE MAGAZINE AND PISTOL ARE UNLOADED. DO NOT SHIP ANY CARTRIDGES WITH A FIREARM.

WHEN AUTHORIZED TO SHIP YOUR FIREARM FOR ADJUSTMENT OR REPAIR, PLEASE CAREFULLY NOTE THE FOLLOWING:

1. A detailed, written explanation of your problem should accompany the firearm being shipped for service or repair. Include model name, serial number and your return address (day telephone number optional). Also include a copy of your original proof of purchase.
2. All firearms should be shipped by common carrier (e.g., UPS), prepaid (we will not accept collect shipments) and insured for their full value. It is illegal for unlicensed individuals to ship handguns through the mail.
3. Due to the vast number of laws governing the transfer and transportation of firearms, it is strongly recommended that your firearm be shipped through a licensed dealer who will also accept delivery on your behalf when the pistol is returned. The shipment should be accompanied by a signed copy of the dealer's license.
4. DO NOT include holsters, custom grips or other accessories when shipping your firearm for service.

5. DO NOT indicate the nature of the contents on the package or use the “Para-Ordnance” name to address the shipment.
6. DO include the return authorization number on the outside of the package.

LIMITS OF LIABILITY

NOTE: PARA-ORDNANCE HAS CAREFULLY PACKAGED THIS PRODUCT PRIOR TO SHIPMENT FROM THE FACTORY. PLEASE EXAMINE IT CAREFULLY AT TIME OF PURCHASE TO ENSURE IT IS UNDAMAGED.

PARA-ORDNANCE SHALL NOT BE RESPONSIBLE IN ANY MANNER WHATSOEVER FOR INJURY, DEATH, OR DAMAGE TO PROPERTY AS A RESULT OF THE INTENTIONAL OR ACCIDENTAL DISCHARGE OF THIS FIREARM, OR FROM ITS PROPER FUNCTION WHEN THE PISTOL IS USED FOR PURPOSES FOR WHICH IT WAS NOT DESIGNED. FURTHERMORE, PARA-ORDNANCE SHALL NOT BE RESPONSIBLE FOR ANY CLAIMS THAT MAY ARISE AS A RESULT OF, WHETHER IN WHOLE OR IN PART, IMPROPER OR CARELESS HANDLING, UNAUTHORIZED MODIFICATIONS, USE OF IMPROPER AMMUNITION (WRONG CALIBER, DEFECTIVE, HAND LOADED, OR RELOADED CARTRIDGES) THAT IS NOT ORIGINAL HIGH QUALITY COMMERCIAL MANUFACTURED AND IN GOOD CONDITION, ABUSE, NEGLECT, CORROSION, OR OTHER INFLUENCES BEYOND OUR IMMEDIATE AND DIRECT CONTROL. UNDER NO CIRCUMSTANCES SHALL PARA-ORDNANCE BE RESPONSIBLE FOR INCIDENTAL OR CONSEQUENTIAL DAMAGES, SUCH AS LOSS OF USE OF PROPERTY, LOSS OF EARNINGS OR PROFITS, OR ANY OTHER COMMERCIAL LOSS.

NOTE: DIFFERENT REMEDIES MAY BE AVAILABLE TO YOU IN DIFFERENT JURISDICTIONS.

SPARE PARTS

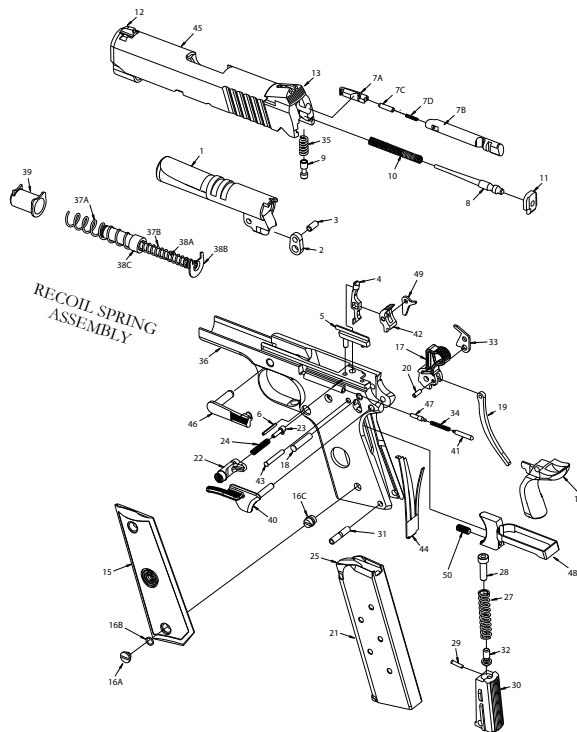
For Para-Ordnance replacement parts please contact your local dealer who should be able to assist you. Alternatively, you can also contact the Para-Ordnance Parts Department by mail or phone, for up-to-date information on the names and locations of our Authorized Service Centers as well as current parts prices.

PARTS AVAILABLE FOR SALE SHOULD BE INSTALLED AT A PARA-ORDNANCE AUTHORIZED SERVICE CENTER. OTHERWISE, IT IS THE PURCHASER'S TOTAL RESPONSIBILITY TO MAKE ABSOLUTELY CERTAIN THAT ANY PARTS FITTED AND INSTALLED ARE OF THE CORRECT TYPE AND THE WORK IS PERFORMED BY A COMPETENT PERSON.

PARA-ORDNANCE WILL NOT BE RESPONSIBLE FOR ANY UNAUTHORIZED ALTERATIONS PERFORMED, UNAUTHORIZED ATTACHMENTS FITTED OR UNAUTHORIZED PARTS USED ON THIS PRODUCT.

NOTES:

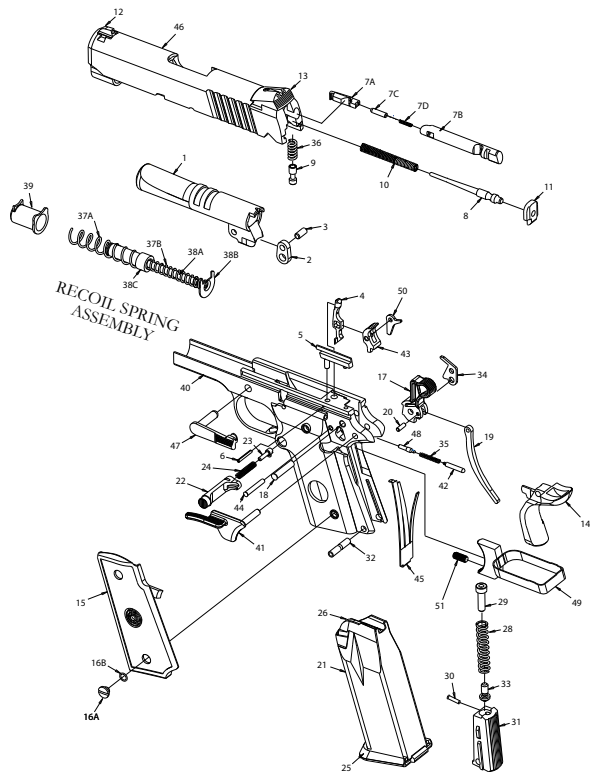
S-A SINGLE STACK PARTS ILLUSTRATION



SINGLE-ACTION, SINGLE STACK PARTS LIST

- | | |
|---------------------------------|--------------------------------------|
| 1. BARREL | 27. MAIN SPRING |
| 2. BARREL LINK | 28. MAIN SPRING CAP |
| 3. BARREL LINK PIN | 29. MAIN SPRING CAP PIN |
| 4. DISCONNECTOR | 30. MAIN SPRING HOUSING (FLAT) |
| 5. EJECTOR | 31. MAIN SPRING HOUSING PIN |
| 6. EJECTOR PIN | 32. MAIN SPRING HOUSING PIN RETAINER |
| 7A. EXTRACTOR CLAW | 33. PLUNGER LEVER |
| 7B. EXTRACTOR BODY | 34. PLUNGER SPRING |
| 7C. EXTRACTOR PLUNGER | 35. PLUNGER SPRING F/P |
| 7D. EXTRACTOR SPRING | 36. RECEIVER |
| 8. FIRING PIN | 37A. RECOIL SPRING OUTER |
| 9. FIRING PIN PLUNGER | 37B. RECOIL SPRING INNER |
| 10. FIRING PIN SPRING | 38A. RECOIL SPRING GUIDE ROD INNER |
| 11. FIRING PIN STOP | 38B. RECOIL SPRING GUIDE PLATE |
| 12. FRONT SIGHT | 38C. RECOIL SPRING GUIDE ROD OUTER |
| 13. FIXED REAR SIGHT | 39. RECOIL SPRING PLUG |
| 14. GRIP SAFETY | 40. SLIDE LOCK SAFETY |
| 15. GRIP (SET) | 41. SAFETY LOCK PLUNGER |
| 16A. GRIP SCREW (4) | 42. SEAR |
| 16B. GRIP SCREW LOCKING RINGS | 43. SEAR PIN |
| 16C. GRIP SCREW BUSHING | 44. SEAR SPRING |
| 17. HAMMER | 45. SLIDE |
| 18. HAMMER PIN | 46. SLIDE STOP |
| 19. HAMMER STRUT | 47. SLIDE STOP PLUNGER |
| 20. HAMMER STRUT PIN | 48. TRIGGER ASSEMBLY |
| 21. MAGAZINE ASSEMBLY | 49. TRIGGER BAR LEVER |
| 22. MAGAZINE CATCH | 50. OVER TRAVEL SCREW (LIMITED ONLY) |
| 23. MAGAZINE CATCH LOCK | |
| 24. MAGAZINE CATCH SPRING | |
| 25. MAGAZINE FOLLOWER | |
| 26. MAGAZINE SPRING (NOT SHOWN) | |

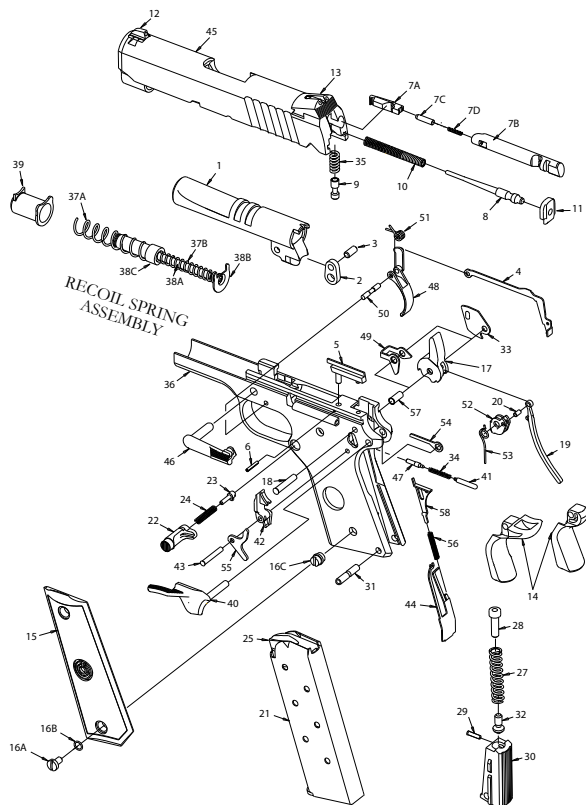
SINGLE-ACTION, HI-CAP PARTS ILLUSTRATION



SINGLE-ACTION, HI-CAP PARTS LIST

- | | |
|-------------------------------|--------------------------------------|
| 1. BARREL | 27. MAGAZINE SPRING (NOT SHOWN) |
| 2. BARREL LINK | 28. MAIN SPRING |
| 3. BARREL LINK PIN | 29. MAIN SPRING CAP |
| 4. DISCONNECTOR | 30. MAIN SPRING CAP PIN |
| 5. EJECTOR | 31. MAIN SPRING HOUSING (FLAT) |
| 6. EJECTOR PIN | 32. MAIN SPRING HOUSING PIN |
| 7A. EXTRACTOR CLAW | 33. MAIN SPRING HOUSING PIN RETAINER |
| 7B. EXTRACTOR BODY | 34. PLUNGER LEVER |
| 7C. EXTRACTOR PLUNGER | 35. PLUNGER SPRING |
| 7D. EXTRACTOR SPRING | 36. PLUNGER SPRING F/P |
| 8. FIRING PIN | 37A. RECOIL SPRING OUTER |
| 9. FIRING PIN PLUNGER | 37B. RECOIL SPRING INNER |
| 10. FIRING PIN SPRING | 38A. RECOIL SPRING GUIDE ROD INNER |
| 11. FIRING PIN STOP | 38B. RECOIL SPRING GUIDE PLATE |
| 12. FRONT SIGHT | 38C. RECOIL SPRING GUIDE ROD OUTER |
| 13. FIXED REAR SIGHT | 39. RECOIL SPRING PLUG |
| 14. GRIP SAFETY | 40. RECEIVER |
| 15. GRIP (SET) | 41. SLIDE LOCK SAFETY |
| 16A. GRIP SCREW (4) | 42. SAFETY LOCK PLUNGER |
| 16B. GRIP SCREW LOCKING RINGS | 43. SEAR |
| 17. HAMMER | 44. SEAR PIN |
| 18. HAMMER PIN | 45. SEAR SPRING |
| 19. HAMMER STRUT | 46. SLIDE |
| 20. HAMMER STRUT PIN | 47. SLIDE STOP |
| 21. MAGAZINE ASSEMBLY | 48. SLIDE STOP PLUNGER |
| 22. MAGAZINE CATCH | 49. TRIGGER ASSEMBLY |
| 23. MAGAZINE CATCH LOCK | 50. TRIGGER BAR LEVER |
| 24. MAGAZINE CATCH SPRING | 51. OVER TRAVEL SCREW (LIMITED ONLY) |
| 25. MAGAZINE FLOOR PLATE | |
| 26. MAGAZINE FOLLOWER | |

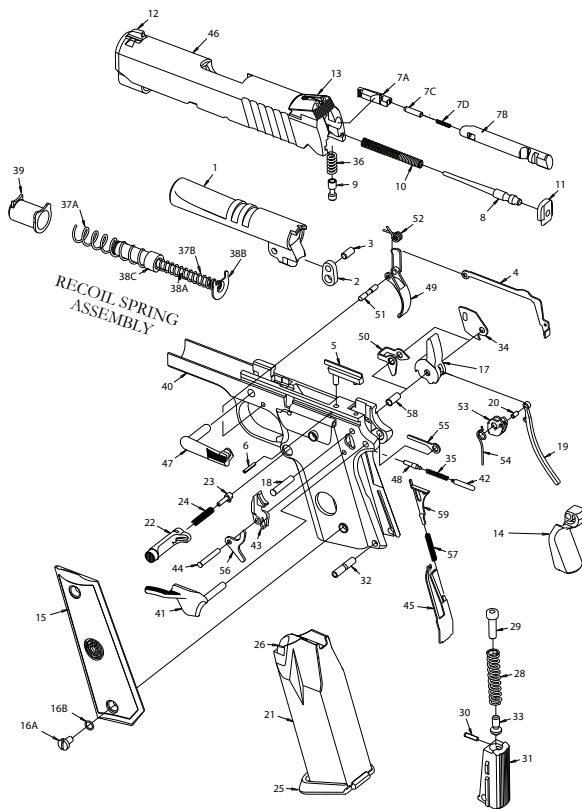
LDA SINGLE STACK PARTS ILLUSTRATION



LDA SINGLE STACK PARTS LIST

1. BARREL
2. BARREL LINK
3. BARREL LINK PIN
4. DRAWBAR
5. EJECTOR
6. EJECTOR PIN
- 7A. EXTRACTOR CLAW
- 7B. EXTRACTOR BODY
- 7C. EXTRACTOR PLUNGER
- 7D. EXTRACTOR SPRING
8. FIRING PIN
9. FIRING PIN PLUNGER
10. FIRING PIN SPRING
11. FIRING PIN STOP
12. FRONT SIGHT
13. REAR SIGHT
14. GRIP SAFETY B/SF
15. GRIP (SET)
- 16A. GRIP SCREW (4)
- 16B. GRIP SCREW LOCKING RINGS
- 16C. GRIP SCREW BUSHING
17. HAMMER (SPURLESS)
18. HAMMER PIN
19. HAMMER STRUT
20. COCKING CAM PIN
21. MAGAZINE ASSEMBLY
22. MAGAZINE CATCH
23. MAGAZINE CATCH LOCK
24. MAGAZINE CATCH SPRING
25. MAGAZINE FOLLOWER
26. MAGAZINE SPRING (NOT SHOWN)
27. MAIN SPRING
28. MAIN SPRING CAP
29. MAIN SPRING CAP PIN
30. MAIN SPRING HOUSING (FLAT)
31. MAIN SPRING HOUSING PIN
32. MAIN SPRING HOUSING PIN RETAINER
33. PLUNGER LEVER
34. PLUNGER SPRING
35. PLUNGER SPRING F/P
36. RECEIVER
- 37A. RECOIL SPRING OUTER
- 37B. RECOIL SPRING INNER
- 38A. RECOIL SPRING GUIDE ROD INNER
- 38B. RECOIL SPRING GUIDE PLATE
- 38C. RECOIL SPRING GUIDE ROD OUTER
39. RECOIL SPRING PLUG
40. SLIDE LOCK SAFETY
41. SAFETY LOCK PLUNGER
42. SEAR
43. SEAR PIN
44. SEAR SPRING
45. SLIDE
46. SLIDE STOP
47. SLIDE STOP PLUNGER
48. TRIGGER
49. STRADDLE
50. TRIGGER PIN
51. TRIGGER RETURN SPRING
52. COCKING CAM
53. HAMMER RETURN SPRING
54. SAFETY LOCK LEVER
55. GRIP SAFETY LEVER
56. DRAWBAR PLATFORM SPRING
57. HAMMER ASSEMBLY PIN
58. DRAWBAR PLATFORM

LDA HIGH CAPACITY PARTS ILLUSTRATION



LDA HIGH CAPACITY PARTS LIST

1. BARREL
2. BARREL LINK
3. BARREL LINK PIN
4. DRAWBAR
5. EJECTOR
6. EJECTOR PIN
- 7A. EXTRACTOR CLAW
- 7B. EXTRACTOR BODY
- 7C. EXTRACTOR PLUNGER
- 7D. EXTRACTOR SPRING
8. FIRING PIN
9. FIRING PIN PLUNGER
10. FIRING PIN SPRING
11. FIRING PIN STOP
12. FRONT SIGHT
13. FIXED REAR SIGHT
14. GRIP SAFETY
15. GRIP (SET)
- 16A. GRIP SCREW (4)
- 16B. GRIP SCREW
- LOCKING RINGS
17. HAMMER (SPURLESS)
18. HAMMER PIN
19. HAMMER STRUT
20. COCKING CAM PIN
21. MAGAZINE ASSEMBLY
22. MAGAZINE CATCH
23. MAGAZINE CATCH LOCK
24. MAGAZINE CATCH SPRING
25. MAGAZINE FLOOR PLATE
26. MAGAZINE FOLLOWER
27. MAGAZINE SPRING (NOT SHOWN)
28. MAIN SPRING
29. MAIN SPRING CAP
30. MAIN SPRING CAP PIN
31. MAIN SPRING HOUSING (FLAT)
32. MAIN SPRING HOUSING PIN
33. MAIN SPRING HOUSING PIN RETAINER
34. PLUNGER LEVER
35. PLUNGER SPRING
36. PLUNGER SPRING F/P
- 37A. RECOIL SPRING OUTER
- 37B. RECOIL SPRING INNER
- 38A. RECOIL SPRING GUIDE ROD INNER
- 38B. RECOIL SPRING GUIDE PLATE
- 38C. RECOIL SPRING GUIDE ROD OUTER
39. RECOIL SPRING PLUG
40. RECEIVER
41. SLIDE LOCK SAFETY
42. SAFETY LOCK PLUNGER
43. SEAR
44. SEAR PIN
45. SEAR SPRING
46. SLIDE
47. SLIDE STOP
48. SLIDE STOP PLUNGER
49. TRIGGER
50. STRADDLE
51. TRIGGER PIN
52. TRIGGER RETURN SPRING
53. COCKING CAM
54. HAMMER RETURN SPRING
55. SAFETY LOCK LEVER
56. GRIP SAFETY LEVER
57. DRAWBAR PLATFORM SPRING
58. HAMMER ASSEMBLY PIN
59. DRAWBAR PLATFORM

FIREARM RECORD

MODEL

SERIAL NO.

PURCHASED FROM

DATE PURCHASED

This instruction manual should always accompany this firearm and be transferred with it upon change of ownership.



980 TAPSCOTT ROAD
SCARBOROUGH, ONTARIO M1X 1C3, CANADA
(416) 297-7855 • FAX: (416) 297-1289
www.paraord.com

MANUAL #PO0208SB